

PSYCHIATRY SERVICES

The Department of Psychiatry offers comprehensive mental health and substance abuse treatment services, through various inpatient and outpatient treatment programs. The treatment services are provided by a multidisciplinary staff consisting of psychiatrists, psychologists, nurse practitioners, social workers, nurses, creative arts therapists, addiction counselors, and medical consultants. Treatment of patients may include individual, family, group therapies, psychoeducational activities, and medication management. All relevant services, within and outside, the hospital are contacted in order to provide the most comprehensive and appropriate care to our patients.

HOURS OF OPERATION

OUTPATIENT MENTAL HEALTH

Monday - Friday, 9:00 am - 5:00 pm
Room# 5A-122 (Adult) 5A-111 (Child)

OUTPATIENT CHEMICAL DEPENDENCY

Room# 9A-200

INPATIENT AND CPEP

24/7 - 5th Floor

OUTPATIENT DETOX SERVICE

Monday - Friday, 8:00 am - 4:00 pm
Room# 9A-256

APPOINTMENTS

To make an appointment, please call the specific listed programs

AFTER HOUR URGENT CALLS

After Hours

For medical concerns after hours, call the Contact Center: **1.844.692.4692**

DIRECTIONS TO WOODHULL

760 BROADWAY
BROOKLYN, NEW YORK 11206

NYC Health + Hospitals/ Woodhull is located at the intersection of Broadway and Flushing Avenue.

By Subway

Take the J, M, or Z train to Flushing Avenue. Take the elevators or stairs to reach the southwest corner of Broadway and Flushing, where the main entrance is located.

Alternatively, take the G train to Flushing Avenue, then take the B57 bus or walk three blocks east toward Broadway, and the main entrance.

By Car

From Brooklyn: Take the Brooklyn-Queens Expressway (BQE) to the Flushing Avenue exit; turn right onto Flushing Avenue; then continue to Woodhull.

From Queens: Take the BQE to McGuinness Blvd (the first exit over the Kosciuszko Bridge); at the third light, turn left onto Humboldt Street (under the bridge), which leads directly to Woodhull. You may take the Jackie Robinson (Interboro) Parkway, to the Bushwick Ave. exit; continue to Myrtle Ave; turn left on Myrtle and go to Throop Ave; turn right on Throop, then continue to Woodhull.

From Manhattan: Follow the Williamsburg Bridge to Broadway (the first exit), and turn left; go straight to Woodhull. You may take the Brooklyn Bridge, by going to Tillary St. (the first light); turn left and go to the BQE; exit at Flushing Avenue; turn right, then go to Woodhull.

By Bus

B15, B40, B46, B43, B54, B57 and B62

Psychiatry Services



Live Your Healthiest Life.

NYC
HEALTH+
HOSPITALS

STAY CONNECTED. FOLLOW US

<https://www.facebook.com/WoodhullHosp>

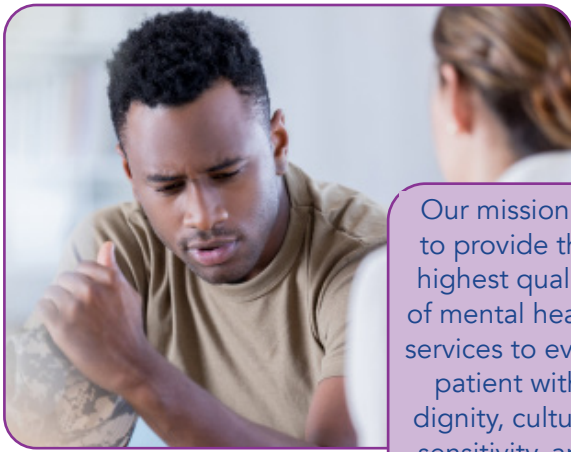
<https://twitter.com/NYCHHealthSystem>

Designed by Medical Communications

NYC
HEALTH+
HOSPITALS

Woodhull





Our mission is to provide the highest quality of mental health services to every patient with dignity, cultural sensitivity, and compassion.

Psychiatry Services

Comprehensive Psychiatric Emergency Program (CPEP)

provides 24-hour, 7-day-a-week emergency care to individuals in crisis. In addition to a Psychiatric Emergency Room, the CPEP also has six (6) extended observation beds and an outreach crisis team. **For information, call 718.963.8794 or 718.963.8439.**

The Adult Inpatient Service operates acute care psychiatric beds divided among five units. Acute psychiatric treatment for both voluntary and involuntary patients is provided using both psychotherapeutic and psychopharmacological interventions by multidisciplinary treatment teams. **For more information, call 718.963.5723 or 718.963.8236.**

The Outpatient Adult Mental Health Practice offers a wide variety of assessment and treatment approaches to adults ages 18 and over. Services include psychiatric evaluation, individual and group therapy, crisis intervention and medication management. The co-located **Center for Integrated Health (CIH)**, is a primary care practice team that offers on site medical assessments and follow-up for patients attending our mental health outpatient practice in conjunction with a psychiatric liaison. **For information, call 718.963.7908 or 718.963.8988.**

The Outpatient Child and Adolescent Practice responds to the special needs of children between the ages of 5 through 18, and their families. The clinical services include psychiatric evaluation; psychological testing; individual, group, play and family therapy; medication management; and parent counseling. This service also responds to consultation requests. **For information, call 718.963.7923.**

The Ambulatory Detox Service is an outpatient treatment program for individuals requiring detoxification from drugs and/or alcohol which allows patient to stay at home in the evening and return each morning for treatment. The program operates Monday to Friday from 8 AM - 4 PM. **To make a referral, call 718.963.5910 or 718.630.3280.**

The Chemical Dependency Outpatient Practice follows the detoxification phase of the treatment continuum and incorporates individual and group therapy services, education, Alcoholics Anonymous and Narcotics Anonymous involvement. **To make a referral, call 718.963.5910 or 718.963.8913.**

Assertive Community Treatment (ACT) is a service delivery model that provides comprehensive, community-based treatment to individuals with serious and persistent mental illness, who are not able to participate in traditional onsite based programs. The services provided by the ACT team include a full range of clinical treatment, psychosocial rehabilitation, and community services and resources, designed to promote recovery and improve independent functioning at work, school, home, and in community. **All referrals to Woodhull's ACT team must come through the Single Point of Access (SPOA) process. For referrals please call 212.801.3343**

The Mobile Crisis Management Team provides urgent mental health care and crisis management to patients in the community. The service operates between 8 am through 5:30 pm, Monday through Friday and between 8:30 am and 4:30 pm on Saturdays. **Family members and community agencies can call NYC WELL (TALK TEXT. CHAT 24/7) at 1-888-NYC-WELL (1.888.692.9355) to schedule a visit.**

Psychiatry Directory at Woodhull

Adult Inpatient Service
718.963.5723
718.963.8236
718.963.5848

Assertive Community Treatment (ACT)
Referrals: 212.801.3343

Chemical Dependency Outpatient Practice
718.963.5910
718.963.8913

Clinical Psychology Internship Program
718.963.5832 or
718.963.8490

Comprehensive Psychiatric Emergency Program (CPEP) 718.963.8794
718.963.8439

Outpatient Detox Service
718.963.5910
718.963.8913
718.630.3280

Outpatient Adult Mental Health Practice
718.963.7908
718.963.8988

Outpatient Child and Adolescent Practice
718.963.7923

Mobile Crisis Management Teams 718.260.7725
Referrals: NYC WELL (TALK.TEXT.CHAT 24/7)
1-888-NYC-WELL
1.888.692.9355