

CHS Access Report: April 2024

Version: 7/16/2024

I. Table of Contents

| | | |
|-------|-------------------------|----|
| I. | Table of Contents | 2 |
| II. | Data Dictionary | 3 |
| III. | Summary Data | 4 |
| IV. | EMTC | 5 |
| V. | GRVC | 6 |
| VI. | NIC | 7 |
| VII. | OBCC | 8 |
| VIII. | RESH | 9 |
| IX. | RMSC | 10 |
| X. | RNDC | 11 |
| XI. | WF | 12 |

II. Data Dictionary

| 1 | CHS Intakes (New Jail Admissions) | Definition |
|------------|---|---|
| 1.1 | Completed CHS Intakes | Number of new jail admission intake encounters completed by CHS providers |
| 1.2 | Average time to completion once known to CHS (hours) | Number of hours between check-in by DOC and check-out by CHS for completed intake encounters (1.1) |
| 2 | Referrals made to mental health service | Definition |
| 2.1 | Referrals made to mental health service | All book and cases with an initial referral to mental health during intake in reporting month, excluding persons known to the mental health service. Facility-specific reports reference the housing facility at the time of the mental health referral was made. |
| 2.2 | Referrals seen within 72 hours | For all book and cases where an initial referral to mental health occurs in reporting month (2.1), total number of book and cases who had a mental health intake or psychiatric assessment where encounter date was <=72 hours from referral date. |
| 2.3 | Percent seen within 72 hours | 2.2 divided by 2.1 |
| 3 | Scheduled services by discipline with outcomes | Definition |
| | | <p>-Shows direct, scheduled service encounters, total overall and by discipline, and disaggregates by outcome category recorded (N, %). Excludes encounters scheduled for discharged patients.</p> <p>-Specialty Clinic-On-Island encounters are for the following specialties: Audiology, Cardiology, Dermatology, Dialysis, ENT, Gynecology, Hand Specialist, ID Specialist, Nephrology, Neurology, Optometry, Orthopedic, Podiatry, Post Partum, Pre-Natal, Rehab Physical Therapy, Reproduction, Surgery</p> <p>-Specialty Clinic-Off-Island encounters are for the following specialties: Audiology, Breast, Cardiology, Cardiovascular, Chest, Dermatology, Endocrinology, ENT, Gastroenterology, General Surgery, Gynecology, Hand, Hematology, ID/Virology, Neurosurgery, Oncology, Ophthalmology, Oral Surgery, Orthopedic, Pain Management, Plastic Surgery, Podiatry, Renal, Rheumatology, Trauma, Urology, Vascular</p> |
| 4 | Outcome Metrics | Definition |
| 4.1 | Percent completed | Sum of scheduled service outcomes "Seen" and "Refused & Verified" divided by "Total Scheduled Services" |
| 5 | Referred Visits | Definition |
| 5.1 | Referred Visits | Referred visits are those medical clinic encounters seen or with a CHS-documented refusal as a result of a referral made by a number of sources including but not limited to CHS Health Triage Line, CHS Patient Relations, other CHS staff, or DOC's sick call process. |

III. Summary Data

| | | |
|----------|--|----------|
| 1 | CHS Intakes (New Jail Admissions) | N |
| 1.1 | Completed CHS Intakes | 1745 |
| 1.2 | Average time to completion once known to CHS (hours) | 4.0 |

| | | |
|----------|--|----------|
| 2 | Referrals made to mental health service | N |
| 2.1 | Referrals made to mental health service | 802 |
| 2.2 | Referrals seen within 72 hours | 734 |
| 2.3 | Percent seen within 72 hours | 92% |

| 3 | Scheduled Services | Medical | | Nursing | | Mental Health | | Reentry Services | | Dental/Oral Surgery | | Specialty Clinic - On Island | | Specialty Clinic - Off Island | | Substance Use | | Total | |
|---|---------------------------------|-------------|-------------|--------------|-------------|---------------|-------------|------------------|-------------|---------------------|-------------|------------------------------|-------------|-------------------------------|-------------|---------------|-------------|----------------|-------------|
| | Service Outcomes | N | % | N | % | N | % | N | % | N | % | N | % | N | % | N | % | N | % |
| | Seen | 1302 | 45% | 19040 | 67% | 10254 | 55% | 3970 | 71% | 1097 | 52% | 1105 | 41% | 290 | 38% | 1528 | 88% | 38586 | 61% |
| | Refused & Verified | 271 | 9% | 2147 | 8% | 58 | 0% | 468 | 8% | 155 | 7% | 280 | 10% | 60 | 8% | 0 | 0% | 3439 | 5% |
| | Not Produced | 1290 | 44% | 7312 | 26% | 5642 | 30% | 1047 | 19% | 828 | 39% | 1259 | 46% | 309 | 40% | 214 | 12% | 17901 | 28% |
| | Rescheduled by CHS | 51 | 2% | 23 | 0% | 2606 | 14% | 99 | 2% | 30 | 1% | 64 | 2% | 39 | 5% | * | ND | 2912** | 5% |
| | Rescheduled by Hospital | N/A | N/A | N/A | N/A | N/A | N/A | N/A | N/A | N/A | N/A | N/A | N/A | 68 | 9% | N/A | N/A | 68 | 0% |
| | Total Scheduled Services | 2914 | 100% | 28522 | 100% | 18560 | 100% | 5584 | 100% | 2110 | 100% | 2708 | 100% | 766 | 100% | 1742** | 100% | 62906** | 100% |

| 4 | Outcome Metrics | Medical | Nursing | Mental Health | Reentry Services | Dental/Oral Surgery | Specialty Clinic - On Island | Specialty Clinic - Off Island | Substance Use | Total |
|-----|-------------------|---------|---------|---------------|------------------|---------------------|------------------------------|-------------------------------|---------------|-------|
| 4.1 | Percent completed | 54% | 74% | 56% | 79% | 59% | 51% | 46% | 88% | 67% |

| | | |
|----------|------------------------|----------|
| 5 | Referred Visits | N |
| 5.1 | Referred Visits | 4053 |

Notes:

* Table cells with 10 or fewer patients are represented with an asterisk to mask patient identity and protected health information (PHI). Cells with 0 patients are not masked.

**Masked numbers are not included in row or column totals or in percentage calculations.

ND = Not Depicted. We are not showing percentages for service outcomes (Table 3) or Percent Completed (Table 4) when the total patient number is 10 or fewer (unless the number is 0) or when masking numbers alters these percentages by more than 3%. These percentages are also not included in the total percentages.

Referred visits are those medical clinic encounters seen as a result of a referral made by a number of sources including but not limited to CHS Health Triage Line, CHS Patient Relations, other CHS staff, or DOC's sick call process.

N/A = Not Applicable

IV. EMTc

| | | |
|----------|--|----------|
| 1 | CHS Intakes (New Jail Admissions) | N |
| 1.1 | Completed CHS Intakes | 1544 |
| 1.2 | Average time to completion once known to CHS (hours) | 3.6 |

| | | |
|----------|--|----------|
| 2 | Referrals made to mental health service | N |
| 2.1 | Referrals made to mental health service | 688 |
| 2.2 | Referrals seen within 72 hours | 631 |
| 2.3 | Percent seen within 72 hours | 92% |

| | Scheduled Services | Medical | | Nursing | | Mental Health | | Reentry Services | | Dental/Oral Surgery | | Specialty Clinic - On Island | | Specialty Clinic - Off Island | | Substance Use | | Total | |
|---------------------------------|-------------------------|-------------|---------------|-------------|---------------|---------------|-------------|------------------|------------|---------------------|--------------|------------------------------|-------------|-------------------------------|------------|---------------|----------------|-------------|-----|
| | | N | % | N | % | N | % | N | % | N | % | N | % | N | % | N | % | N | % |
| 3 | Service Outcomes | | | | | | | | | | | | | | | | | | |
| | Seen | 269 | 34% | 4012 | 65% | 1695 | 57% | 1534 | 77% | 254 | 69% | 125 | 40% | 18 | 32% | 745 | 86% | 8652 | 64% |
| | Refused & Verified | 40 | 5% | 590 | 10% | * | ND | 230 | 12% | 60 | 16% | * | ND | * | ND | 0 | 0% | 920** | 7% |
| | Not Produced | 472 | 60% | 1532 | 25% | 826 | 28% | 215 | 11% | 52 | 14% | 191 | 60% | 39 | 68% | 118 | 14% | 3445 | 26% |
| | Rescheduled by CHS | * | ND | * | ND | 436 | 15% | 19 | 1% | 0 | 0% | * | ND | * | ND | 0 | 0% | 455** | 3% |
| | Rescheduled by Hospital | N/A | N/A | N/A | N/A | N/A | N/A | N/A | N/A | N/A | N/A | N/A | N/A | * | ND | N/A | N/A | 0** | ND |
| Total Scheduled Services | 781** | 100% | 6134** | 100% | 2957** | 100% | 1998 | 100% | 366 | 100% | 316** | 100% | 57** | 100% | 863 | 100% | 13472** | 100% | |

| | Outcome Metrics | Medical | Nursing | Mental Health | Reentry Services | Dental/Oral Surgery | Specialty Clinic - On Island | Specialty Clinic - Off Island | Substance Use | Total |
|----------|--------------------------|---------|---------|---------------|------------------|---------------------|------------------------------|-------------------------------|---------------|-------|
| 4 | Percent completed | 40% | 75% | 57% | 88% | 86% | 40% | 32% | 86% | 71% |

| | | |
|----------|------------------------|----------|
| 5 | Referred Visits | N |
| 5.1 | Referred Visits | 849 |

Notes:

* Table cells with 10 or fewer patients are represented with an asterisk to mask patient identity and protected health information (PHI). Cells with 0 patients are not masked.

**Masked numbers are not included in row or column totals or in percentage calculations.

ND = Not Depicted. We are not showing percentages for service outcomes (Table 3) or Percent Completed (Table 4) when the total patient number is 10 or fewer (unless the number is 0) or when masking numbers alters these percentages by more than 3%. These percentages are also not included in the total percentages.

Referred visits are those medical clinic encounters seen as a result of a referral made by a number of sources including but not limited to CHS Health Triage Line, CHS Patient Relations, other CHS staff, or DOC's sick call process.

N/A = Not Applicable

V. GRVC

| | | |
|------------|--|----------|
| 1 | CHS Intakes (New Jail Admissions) | N |
| 1.1 | Completed CHS Intakes | 32 |
| 1.2 | Average time to completion once known to CHS (hours) | 2.6 |

| | | |
|------------|--|----------|
| 2 | Referrals made to mental health service | N |
| 2.1 | Referrals made to mental health service | 24 |
| 2.2 | Referrals seen within 72 hours | 20 |
| 2.3 | Percent seen within 72 hours | 83% |

| 3 | Scheduled Services | Medical | | Nursing | | Mental Health | | Reentry Services | | Dental/Oral Surgery | | Specialty Clinic - On Island | | Specialty Clinic - Off Island | | Substance Use | | Total | |
|---|---------------------------------|------------|-------------|---------------|-------------|---------------|-------------|------------------|-------------|---------------------|-------------|------------------------------|-------------|-------------------------------|-------------|---------------|-------------|----------------|-------------|
| | Service Outcomes | N | % | N | % | N | % | N | % | N | % | N | % | N | % | N | % | N | % |
| | Seen | 153 | 53% | 2737 | 61% | 3204 | 69% | 667 | 79% | 160 | 42% | 89 | 31% | 41 | ND | 80 | ND | 7131 | 64% |
| | Refused & Verified | 34 | 12% | 520 | 12% | * | ND | 73 | 9% | 17 | 4% | * | ND | * | ND | 0 | 0% | 644** | 6% |
| | Not Produced | 101 | 35% | 1203 | 27% | 869 | 19% | 107 | 13% | 194 | 51% | 194 | 69% | 37 | ND | * | ND | 2705** | 24% |
| | Rescheduled by CHS | 0 | 0% | * | ND | 580 | 12% | * | ND | 12 | 3% | * | ND | * | ND | 0 | 0% | 592** | 5% |
| | Rescheduled by Hospital | N/A | N/A | N/A | N/A | N/A | N/A | N/A | N/A | N/A | N/A | N/A | N/A | * | ND | N/A | N/A | 0** | ND |
| | Total Scheduled Services | 288 | 100% | 4460** | 100% | 4653** | 100% | 847** | 100% | 383 | 100% | 283** | 100% | 78** | 100% | 80** | 100% | 11072** | 100% |

| 4 | Outcome Metrics | Medical | Nursing | Mental Health | Reentry Services | Dental/Oral Surgery | Specialty Clinic - On Island | Specialty Clinic - Off Island | Substance Use | Total |
|------------|-------------------|---------|---------|---------------|------------------|---------------------|------------------------------|-------------------------------|---------------|-------|
| 4.1 | Percent completed | 65% | 73% | 69% | 87% | 46% | 31% | ND | ND | 70% |

| | | |
|------------|------------------------|----------|
| 5 | Referred Visits | N |
| 5.1 | Referred Visits | 426 |

Notes:

* Table cells with 10 or fewer patients are represented with an asterisk to mask patient identity and protected health information (PHI). Cells with 0 patients are not masked.

**Masked numbers are not included in row or column totals or in percentage calculations.

ND = Not Depicted. We are not showing percentages for service outcomes (Table 3) or Percent Completed (Table 4) when the total patient number is 10 or fewer (unless the number is 0) or when masking numbers alters these percentages by more than 3%. These percentages are also not included in the total percentages.

Referred visits are those medical clinic encounters seen as a result of a referral made by a number of sources including but not limited to CHS Health Triage Line, CHS Patient Relations, other CHS staff, or DOC's sick call process.

N/A = Not Applicable

VI. NIC

| | | |
|------------|--|----------|
| 1 | CHS Intakes (New Jail Admissions) | N |
| 1.1 | Completed CHS Intakes | 0 |
| 1.2 | Average time to completion once known to CHS (hours) | N/A |

| | | |
|------------|--|----------|
| 2 | Referrals made to mental health service | N |
| 2.1 | Referrals made to mental health service | * |
| 2.2 | Referrals seen within 72 hours | * |
| 2.3 | Percent seen within 72 hours | ND |

| | Scheduled Services | Medical | | Nursing | | Mental Health | | Reentry Services | | Dental/Oral Surgery | | Specialty Clinic - On Island | | Specialty Clinic - Off Island | | Substance Use | | Total | |
|---------------------------------|-------------------------|-------------|---------------|-------------|--------------|---------------|------------|------------------|-----------|---------------------|--------------|------------------------------|--------------|-------------------------------|-------------|---------------|---------------|-------------|-----|
| | | N | % | N | % | N | % | N | % | N | % | N | % | N | % | N | % | N | % |
| 3 | Service Outcomes | | | | | | | | | | | | | | | | | | |
| | Seen | 179 | 72% | 6333 | 90% | 462 | 73% | 172 | 77% | 29 | 35% | 251 | 63% | 89 | 51% | 67 | 100% | 7582 | 86% |
| | Refused & Verified | 26 | 10% | 399 | 6% | * | ND | 15 | 7% | 27 | 33% | 69 | 17% | 21 | 12% | 0 | 0% | 557** | 6% |
| | Not Produced | 22 | 9% | 294 | 4% | 129 | 20% | 17 | 8% | 27 | 33% | 77 | 19% | 47 | 27% | * | ND | 613** | 7% |
| | Rescheduled by CHS | 22 | 9% | * | ND | 45 | 7% | 20 | 9% | 0 | 0% | * | ND | * | ND | 0 | 0% | 87** | 1% |
| | Rescheduled by Hospital | N/A | N/A | N/A | N/A | N/A | N/A | N/A | N/A | N/A | N/A | N/A | N/A | N/A | 18 | 10% | N/A | N/A | 18 |
| Total Scheduled Services | 249 | 100% | 7026** | 100% | 636** | 100% | 224 | 100% | 83 | 100% | 397** | 100% | 175** | 100% | 67** | 100% | 8857** | 100% | |

| | Outcome Metrics | Medical | Nursing | Mental Health | Reentry Services | Dental/Oral Surgery | Specialty Clinic - On Island | Specialty Clinic - Off Island | Substance Use | Total |
|------------|-------------------|---------|---------|---------------|------------------|---------------------|------------------------------|-------------------------------|---------------|-------|
| 4.1 | Percent completed | 82% | 96% | 73% | 83% | 67% | 81% | 63% | 100% | 92% |

| | | |
|------------|------------------------|----------|
| 5 | Referred Visits | N |
| 5.1 | Referred Visits | 289 |

Notes:

* Table cells with 10 or fewer patients are represented with an asterisk to mask patient identity and protected health information (PHI). Cells with 0 patients are not masked.

**Masked numbers are not included in row or column totals or in percentage calculations.

ND = Not Depicted. We are not showing percentages for service outcomes (Table 3) or Percent Completed (Table 4) when the total patient number is 10 or fewer (unless the number is 0) or when masking numbers alters these percentages by more than 3%. These percentages are also not included in the total percentages.

Referred visits are those medical clinic encounters seen as a result of a referral made by a number of sources including but not limited to CHS Health Triage Line, CHS Patient Relations, other CHS staff, or DOC's sick call process.

N/A = Not Applicable

VII. OBCC

| | | |
|----------|--|----------|
| 1 | CHS Intakes (New Jail Admissions) | N |
| 1.1 | Completed CHS Intakes | 0 |
| 1.2 | Average time to completion once known to CHS (hours) | N/A |

| | | |
|----------|--|----------|
| 2 | Referrals made to mental health service | N |
| 2.1 | Referrals made to mental health service | 0 |
| 2.2 | Referrals seen within 72 hours | N/A |
| 2.3 | Percent seen within 72 hours | N/A |

| 3 | Scheduled Services | Medical | | Nursing | | Mental Health | | Reentry Services | | Dental/Oral Surgery | | Specialty Clinic - On Island | | Specialty Clinic - Off Island | | Substance Use | | Total | |
|---|---------------------------------|--------------|-------------|-------------|-------------|---------------|-------------|------------------|-------------|---------------------|-------------|------------------------------|-------------|-------------------------------|-------------|---------------|-------------|----------------|-------------|
| | Service Outcomes | N | % | N | % | N | % | N | % | N | % | N | % | N | % | N | % | N | % |
| | Seen | 87 | 21% | 1358 | 37% | 2121 | 54% | 452 | 64% | 338 | 55% | 205 | 41% | 62 | 38% | 266 | 88% | 4889 | 48% |
| | Refused & Verified | 37 | 9% | 55 | 2% | * | ND | 43 | 6% | 13 | 2% | 67 | 14% | 11 | 7% | 0 | 0% | 226** | 2% |
| | Not Produced | 292 | 70% | 2233 | 61% | 1053 | 27% | 208 | 30% | 265 | 43% | 204 | 41% | 69 | 43% | 35 | 12% | 4359 | 42% |
| | Rescheduled by CHS | * | ND | 15 | 0% | 751 | 19% | * | ND | * | ND | 19 | 4% | * | ND | 0 | 0% | 785** | 8% |
| | Rescheduled by Hospital | N/A | N/A | N/A | N/A | N/A | N/A | N/A | N/A | N/A | N/A | N/A | N/A | 20 | 12% | N/A | N/A | 20 | 0% |
| | Total Scheduled Services | 416** | 100% | 3661 | 100% | 3925** | 100% | 703** | 100% | 616** | 100% | 495 | 100% | 162** | 100% | 301 | 100% | 10279** | 100% |

| 4 | Outcome Metrics | Medical | Nursing | Mental Health | Reentry Services | Dental/Oral Surgery | Specialty Clinic - On Island | Specialty Clinic - Off Island | Substance Use | Total |
|-----|-------------------|---------|---------|---------------|------------------|---------------------|------------------------------|-------------------------------|---------------|-------|
| 4.1 | Percent completed | 30% | 39% | 54% | 70% | 57% | 55% | 45% | 88% | 50% |

| | | |
|----------|------------------------|----------|
| 5 | Referred Visits | N |
| 5.1 | Referred Visits | 618 |

Notes:

* Table cells with 10 or fewer patients are represented with an asterisk to mask patient identity and protected health information (PHI). Cells with 0 patients are not masked.

**Masked numbers are not included in row or column totals or in percentage calculations.

ND = Not Depicted. We are not showing percentages for service outcomes (Table 3) or Percent Completed (Table 4) when the total patient number is 10 or fewer (unless the number is 0) or when masking numbers alters these percentages by more than 3%. These percentages are also not included in the total percentages.

Referred visits are those medical clinic encounters seen as a result of a referral made by a number of sources including but not limited to CHS Health Triage Line, CHS Patient Relations, other CHS staff, or DOC's sick call process.

N/A = Not Applicable

VIII. RESH

| | | |
|------------|--|----------|
| 1 | CHS Intakes (New Jail Admissions) | N |
| 1.1 | Completed CHS Intakes | 0 |
| 1.2 | Average time to completion once known to CHS (hours) | N/A |

| | | |
|------------|--|----------|
| 2 | Referrals made to mental health service | N |
| 2.1 | Referrals made to mental health service | 0 |
| 2.2 | Referrals seen within 72 hours | N/A |
| 2.3 | Percent seen within 72 hours | N/A |

| 3 | Scheduled Services | Medical | | Nursing | | Mental Health | | Reentry Services | | Dental/Oral Surgery | | Specialty Clinic - On Island | | Specialty Clinic - Off Island | | Substance Use | | Total | |
|---|---------------------------------|-------------|-------------|--------------|-------------|---------------|-------------|------------------|-------------|---------------------|-------------|------------------------------|-------------|-------------------------------|-----------|---------------|-----------|---------------|-------------|
| | Service Outcomes | N | % | N | % | N | % | N | % | N | % | N | % | N | % | N | % | N | % |
| | Seen | 27 | ND | 308 | 44% | 136 | 32% | 29 | ND | 17 | ND | 31 | 33% | * | ND | * | ND | 548** | 41% |
| | Refused & Verified | * | ND | 18 | 3% | 0 | 0% | * | ND | * | ND | 14 | 15% | 0 | 0% | 0 | 0% | 32** | 2% |
| | Not Produced | 21 | ND | 375 | 53% | 178 | 42% | 18 | ND | 12 | ND | 49 | 52% | * | ND | 0 | 0% | 653** | 49% |
| | Rescheduled by CHS | 0 | 0% | * | ND | 110 | 26% | 0 | 0% | 0 | 0% | * | ND | * | ND | 0 | 0% | 110** | 8% |
| | Rescheduled by Hospital | N/A | N/A | N/A | N/A | N/A | N/A | N/A | N/A | N/A | N/A | N/A | N/A | 0 | 0% | N/A | N/A | 0 | 0% |
| | Total Scheduled Services | 48** | 100% | 701** | 100% | 424 | 100% | 47** | 100% | 29** | 100% | 94** | 100% | 0** | 0% | 0** | 0% | 1343** | 100% |

| 4 | Outcome Metrics | Medical | Nursing | Mental Health | Reentry Services | Dental/Oral Surgery | Specialty Clinic - On Island | Specialty Clinic - Off Island | Substance Use | Total |
|------------|-------------------|---------|---------|---------------|------------------|---------------------|------------------------------|-------------------------------|---------------|-------|
| 4.1 | Percent completed | ND | 47% | 32% | ND | ND | 48% | ND | ND | 43% |

| | | |
|------------|------------------------|----------|
| 5 | Referred Visits | N |
| 5.1 | Referred Visits | 348 |

Notes:

* Table cells with 10 or fewer patients are represented with an asterisk to mask patient identity and protected health information (PHI). Cells with 0 patients are not masked.

**Masked numbers are not included in row or column totals or in percentage calculations.

ND = Not Depicted. We are not showing percentages for service outcomes (Table 3) or Percent Completed (Table 4) when the total patient number is 10 or fewer (unless the number is 0) or when masking numbers alters these percentages by more than 3%. These percentages are also not included in the total percentages.

Referred visits are those medical clinic encounters seen as a result of a referral made by a number of sources including but not limited to CHS Health Triage Line, CHS Patient Relations, other CHS staff, or DOC's sick call process.

N/A = Not Applicable

IX. RMSC

| | | |
|----------|--|----------|
| 1 | CHS Intakes (New Jail Admissions) | N |
| 1.1 | Completed CHS Intakes | 165 |
| 1.2 | Average time to completion once known to CHS (hours) | 8.7 |

| | | |
|----------|--|----------|
| 2 | Referrals made to mental health service | N |
| 2.1 | Referrals made to mental health service | 85 |
| 2.2 | Referrals seen within 72 hours | 79 |
| 2.3 | Percent seen within 72 hours | 93% |

| 3 | Scheduled Services | Medical | | Nursing | | Mental Health | | Reentry Services | | Dental/Oral Surgery | | Specialty Clinic - On Island | | Specialty Clinic - Off Island | | Substance Use | | Total | |
|---|---------------------------------|------------|-------------|---------------|-------------|---------------|-------------|------------------|-------------|---------------------|-------------|------------------------------|-------------|-------------------------------|-------------|---------------|-------------|---------------|-------------|
| | Service Outcomes | N | % | N | % | N | % | N | % | N | % | N | % | N | % | N | % | N | % |
| | Seen | 287 | 58% | 1731 | 62% | 1322 | 69% | 655 | 78% | 107 | ND | 253 | 44% | 18 | ND | 225 | 87% | 4598 | 64% |
| | Refused & Verified | 31 | 6% | 248 | 9% | * | ND | 47 | 6% | * | ND | 41 | 7% | 13 | ND | 0 | 0% | 380** | 5% |
| | Not Produced | 159 | 32% | 827 | 29% | 481 | 25% | 118 | 14% | 91 | ND | 272 | 47% | 32 | ND | 35 | 13% | 2015 | 28% |
| | Rescheduled by CHS | 19 | 4% | * | ND | 125 | 6% | 15 | 2% | * | ND | 11 | 2% | * | ND | * | ND | 170** | 2% |
| | Rescheduled by Hospital | N/A | N/A | N/A | N/A | N/A | N/A | N/A | N/A | N/A | N/A | N/A | N/A | * | ND | N/A | N/A | 0** | ND |
| | Total Scheduled Services | 496 | 100% | 2806** | 100% | 1928** | 100% | 835 | 100% | 198** | 100% | 577 | 100% | 63** | 100% | 260** | 100% | 7163** | 100% |

| 4 | Outcome Metrics | Medical | Nursing | Mental Health | Reentry Services | Dental/Oral Surgery | Specialty Clinic - On Island | Specialty Clinic - Off Island | Substance Use | Total |
|-----|-------------------|---------|---------|---------------|------------------|---------------------|------------------------------|-------------------------------|---------------|-------|
| 4.1 | Percent completed | 64% | 71% | 69% | 84% | ND | 51% | ND | 87% | 69% |

| | | |
|----------|------------------------|----------|
| 5 | Referred Visits | N |
| 5.1 | Referred Visits | 618 |

Notes:

* Table cells with 10 or fewer patients are represented with an asterisk to mask patient identity and protected health information (PHI). Cells with 0 patients are not masked.

**Masked numbers are not included in row or column totals or in percentage calculations.

ND = Not Depicted. We are not showing percentages for service outcomes (Table 3) or Percent Completed (Table 4) when the total patient number is 10 or fewer (unless the number is 0) or when masking numbers alters these percentages by more than 3%. These percentages are also not included in the total percentages.

Referred visits are those medical clinic encounters seen as a result of a referral made by a number of sources including but not limited to CHS Health Triage Line, CHS Patient Relations, other CHS staff, or DOC's sick call process.

N/A = Not Applicable

X. RNDC

| | | |
|------------|--|----------|
| 1 | CHS Intakes (New Jail Admissions) | N |
| 1.1 | Completed CHS Intakes | 0 |
| 1.2 | Average time to completion once known to CHS (hours) | N/A |

| | | |
|------------|--|----------|
| 2 | Referrals made to mental health service | N |
| 2.1 | Referrals made to mental health service | 0 |
| 2.2 | Referrals seen within 72 hours | N/A |
| 2.3 | Percent seen within 72 hours | N/A |

| | Scheduled Services | Medical | | Nursing | | Mental Health | | Reentry Services | | Dental/Oral Surgery | | Specialty Clinic - On Island | | Specialty Clinic - Off Island | | Substance Use | | Total | |
|----------|---------------------------------|------------|-------------|-------------|-------------|---------------|-------------|------------------|-------------|---------------------|-------------|------------------------------|-------------|-------------------------------|-------------|---------------|-------------|---------------|-------------|
| | | N | % | N | % | N | % | N | % | N | % | N | % | N | % | N | % | N | % |
| 3 | Service Outcomes | | | | | | | | | | | | | | | | | | |
| | Seen | 139 | 44% | 881 | 57% | 871 | 30% | 333 | 44% | 145 | 44% | 82 | 31% | 31 | ND | 126 | 86% | 2608 | 41% |
| | Refused & Verified | 72 | 23% | 95 | 6% | 27 | 1% | 51 | 7% | 20 | 6% | 86 | 32% | * | ND | 0 | 0% | 351** | 6% |
| | Not Produced | 104 | 33% | 573 | 37% | 1675 | 58% | 346 | 46% | 165 | 50% | 99 | 37% | 36 | ND | 20 | 14% | 3018 | 48% |
| | Rescheduled by CHS | 0 | 0% | 0 | 0% | 321 | 11% | 21 | 3% | 0 | 0% | * | ND | * | ND | 0 | 0% | 342** | 5% |
| | Rescheduled by Hospital | N/A | N/A | N/A | N/A | N/A | N/A | N/A | N/A | N/A | N/A | N/A | N/A | * | ND | N/A | N/A | 0** | ND |
| | Total Scheduled Services | 315 | 100% | 1549 | 100% | 2894 | 100% | 751 | 100% | 330 | 100% | 267** | 100% | 67** | 100% | 146 | 100% | 6319** | 100% |

| | Outcome Metrics | Medical | Nursing | Mental Health | Reentry Services | Dental/Oral Surgery | Specialty Clinic - On Island | Specialty Clinic - Off Island | Substance Use | Total |
|------------|-------------------|---------|---------|---------------|------------------|---------------------|------------------------------|-------------------------------|---------------|-------|
| 4.1 | Percent completed | 67% | 63% | 31% | 51% | 50% | 63% | ND | 86% | 47% |

| | | |
|------------|------------------------|----------|
| 5 | Referred Visits | N |
| 5.1 | Referred Visits | 453 |

Notes:

* Table cells with 10 or fewer patients are represented with an asterisk to mask patient identity and protected health information (PHI). Cells with 0 patients are not masked.

**Masked numbers are not included in row or column totals or in percentage calculations.

ND = Not Depicted. We are not showing percentages for service outcomes (Table 3) or Percent Completed (Table 4) when the total patient number is 10 or fewer (unless the number is 0) or when masking numbers alters these percentages by more than 3%. These percentages are also not included in the total percentages.

Referred visits are those medical clinic encounters seen as a result of a referral made by a number of sources including but not limited to CHS Health Triage Line, CHS Patient Relations, other CHS staff, or DOC's sick call process.

N/A = Not Applicable

XI. WF

| | | |
|------------|--|----------|
| 1 | CHS Intakes (New Jail Admissions) | N |
| 1.1 | Completed CHS Intakes | * |
| 1.2 | Average time to completion once known to CHS (hours) | 2.4 |

| | | |
|------------|--|----------|
| 2 | Referrals made to mental health service | N |
| 2.1 | Referrals made to mental health service | * |
| 2.2 | Referrals seen within 72 hours | * |
| 2.3 | Percent seen within 72 hours | ND |

| | Scheduled Services | Medical | | Nursing | | Mental Health | | Reentry Services | | Dental/Oral Surgery | | Specialty Clinic - On Island | | Specialty Clinic - Off Island | | Substance Use | | Total | |
|---------------------------------|-------------------------|-------------|---------------|-------------|---------------|---------------|--------------|------------------|-------------|---------------------|--------------|------------------------------|-------------|-------------------------------|-----------|---------------|---------------|-------------|-----|
| | | N | % | N | % | N | % | N | % | N | % | N | % | N | % | N | % | N | % |
| 3 | Service Outcomes | | | | | | | | | | | | | | | | | | |
| | Seen | 161 | 52% | 1680 | 77% | 443 | 40% | 128 | 82% | 47 | 68% | 69 | 29% | 25 | ND | 16 | 100% | 2569 | 62% |
| | Refused & Verified | 27 | 9% | 222 | 10% | * | ND | * | ND | * | ND | 0 | 0% | * | ND | 0 | 0% | 249** | 6% |
| | Not Produced | 119 | 39% | 275 | 13% | 431 | 39% | 18 | 11% | 22 | 32% | 173 | 71% | 40 | ND | 0 | 0% | 1078 | 26% |
| | Rescheduled by CHS | * | ND | * | ND | 238 | 21% | 11 | 7% | * | ND | * | ND | * | ND | 0 | 0% | 249** | 6% |
| | Rescheduled by Hospital | N/A | N/A | N/A | N/A | N/A | N/A | N/A | N/A | N/A | N/A | N/A | N/A | * | ND | N/A | N/A | 0** | ND |
| Total Scheduled Services | 307** | 100% | 2177** | 100% | 1112** | 100% | 157** | 100% | 69** | 100% | 242** | 100% | 65** | 100% | 16 | 100% | 4145** | 100% | |

| | Outcome Metrics | Medical | Nursing | Mental Health | Reentry Services | Dental/Oral Surgery | Specialty Clinic - On Island | Specialty Clinic - Off Island | Substance Use | Total |
|------------|------------------------|---------|---------|---------------|------------------|---------------------|------------------------------|-------------------------------|---------------|-------|
| 4 | Outcome Metrics | | | | | | | | | |
| 4.1 | Percent completed | 61% | 87% | 40% | 82% | 68% | 29% | ND | 100% | 68% |

| | | |
|------------|------------------------|----------|
| 5 | Referred Visits | N |
| 5.1 | Referred Visits | 452 |

Notes:

* Table cells with 10 or fewer patients are represented with an asterisk to mask patient identity and protected health information (PHI). Cells with 0 patients are not masked.

**Masked numbers are not included in row or column totals or in percentage calculations.

ND = Not Depicted. We are not showing percentages for service outcomes (Table 3) or Percent Completed (Table 4) when the total patient number is 10 or fewer (unless the number is 0) or when masking numbers alters these percentages by more than 3%. These percentages are also not included in the total percentages.

Referred visits are those medical clinic encounters seen as a result of a referral made by a number of sources including but not limited to CHS Health Triage Line, CHS Patient Relations, other CHS staff, or DOC's sick call process.

N/A = Not Applicable

CHS Access Report: May 2024

Version: 7/16/2024

I. Table of Contents

| | | |
|-------|-------------------------|----|
| I. | Table of Contents | 2 |
| II. | Data Dictionary | 3 |
| III. | Summary Data | 4 |
| IV. | EMTC | 5 |
| V. | GRVC | 6 |
| VI. | NIC | 7 |
| VII. | OBCC | 8 |
| VIII. | RESH | 9 |
| IX. | RMSC | 10 |
| X. | RNDC | 11 |
| XI. | WF | 12 |

II. Data Dictionary

| 1 | CHS Intakes (New Jail Admissions) | Definition |
|-----|--|--|
| 1.1 | Completed CHS Intakes | Number of new jail admission intake encounters completed by CHS providers |
| 1.2 | Average time to completion once known to CHS (hours) | Number of hours between check-in by DOC and check-out by CHS for completed intake encounters (1.1) |
| 2 | Referrals made to mental health service | Definition |
| 2.1 | Referrals made to mental health service | All book and cases with an initial referral to mental health during intake in reporting month, excluding persons known to the mental health service. Facility-specific reports reference the housing facility at the time of the mental health referral was made. |
| 2.2 | Referrals seen within 72 hours | For all book and cases where an initial referral to mental health occurs in reporting month (2.1), total number of book and cases who had a mental health intake or psychiatric assessment where encounter date was <=72 hours from referral date. |
| 2.3 | Percent seen within 72 hours | 2.2 divided by 2.1 |
| 3 | Scheduled services by discipline with outcomes | Definition |
| | | -Shows direct, scheduled service encounters, total overall and by discipline, and disaggregates by outcome category recorded (N, %). Excludes encounters scheduled for discharged patients. -Specialty Clinic-On-Island encounters are for the following specialties: Audiology, Cardiology, Dermatology, Dialysis, ENT, Gynecology, Hand Specialist, ID Specialist, Nephrology, Neurology, Optometry, Orthopedic, Podiatry, Post Partum, Pre-Natal, Rehab Physical Therapy, Reproduction, Surgery -Specialty Clinic-Off-Island encounters are for the following specialties: Audiology, Breast, Cardiology, Cardiovascular, Chest, Dermatology, Endocrinology, ENT, Gastroenterology, General Surgery, Gynecology, Hand, Hematology, ID/Virology, Neurosurgery, Oncology, Ophthalmology, Oral Surgery, Orthopedic, Pain Management, Plastic Surgery, Podiatry, Renal, Rheumatology, Trauma, Urology, Vascular |
| 4 | Outcome Metrics | Definition |
| 4.1 | Percent completed | Sum of scheduled service outcomes "Seen" and "Refused & Verified" divided by "Total Scheduled Services" |
| 5 | Referred Visits | Definition |
| 5.1 | Referred Visits | Referred visits are those medical clinic encounters seen or with a CHS-documented refusal as a result of a referral made by a number of sources including but not limited to CHS Health Triage Line, CHS Patient Relations, other CHS staff, or DOC's sick call process. |

III. Summary Data

| | | |
|----------|--|----------|
| 1 | CHS Intakes (New Jail Admissions) | N |
| 1.1 | Completed CHS Intakes | 1930 |
| 1.2 | Average time to completion once known to CHS (hours) | 4.0 |

| | | |
|----------|--|----------|
| 2 | Referrals made to mental health service | N |
| 2.1 | Referrals made to mental health service | 898 |
| 2.2 | Referrals seen within 72 hours | 780 |
| 2.3 | Percent seen within 72 hours | 87% |

| 3 | Scheduled Services | Medical | | Nursing | | Mental Health | | Reentry Services | | Dental/Oral Surgery | | Specialty Clinic - On Island | | Specialty Clinic - Off Island | | Substance Use | | Total | |
|---|---------------------------------|-------------|-------------|--------------|-------------|---------------|-------------|------------------|-------------|---------------------|-------------|------------------------------|-------------|-------------------------------|-------------|---------------|-------------|----------------|-------------|
| | Service Outcomes | N | % | N | % | N | % | N | % | N | % | N | % | N | % | N | % | N | % |
| | Seen | 1150 | 41% | 19594 | 67% | 10705 | 55% | 3995 | 71% | 1024 | 50% | 1145 | 41% | 293 | 42% | 1497 | 87% | 39403 | 61% |
| | Refused & Verified | 277 | 10% | 2334 | 8% | 65 | 0% | 482 | 9% | 148 | 7% | 255 | 9% | 51 | 7% | * | ND | 3612** | 6% |
| | Not Produced | 1295 | 46% | 7394 | 25% | 5923 | 31% | 1063 | 19% | 869 | 42% | 1343 | 49% | 281 | 41% | 227 | 13% | 18395 | 29% |
| | Rescheduled by CHS | 96 | 3% | 22 | 0% | 2602 | 13% | 70 | 1% | 19 | 1% | 26 | 1% | 26 | 4% | * | ND | 2861** | 4% |
| | Rescheduled by Hospital | N/A | N/A | N/A | N/A | N/A | N/A | N/A | N/A | N/A | N/A | N/A | N/A | 40 | 6% | N/A | N/A | 40 | 0% |
| | Total Scheduled Services | 2818 | 100% | 29344 | 100% | 19295 | 100% | 5610 | 100% | 2060 | 100% | 2769 | 100% | 691 | 100% | 1724** | 100% | 64311** | 100% |

| 4 | Outcome Metrics | Medical | Nursing | Mental Health | Reentry Services | Dental/Oral Surgery | Specialty Clinic - On Island | Specialty Clinic - Off Island | Substance Use | Total |
|-----|-------------------|---------|---------|---------------|------------------|---------------------|------------------------------|-------------------------------|---------------|-------|
| 4.1 | Percent completed | 51% | 75% | 56% | 80% | 57% | 51% | 50% | 87% | 67% |

| | | |
|----------|------------------------|----------|
| 5 | Referred Visits | N |
| 5.1 | Referred Visits | 4112 |

Notes:

* Table cells with 10 or fewer patients are represented with an asterisk to mask patient identity and protected health information (PHI). Cells with 0 patients are not masked.

**Masked numbers are not included in row or column totals or in percentage calculations.

ND = Not Depicted. We are not showing percentages for service outcomes (Table 3) or Percent Completed (Table 4) when the total patient number is 10 or fewer (unless the number is 0) or when masking numbers alters these percentages by more than 3%. These percentages are also not included in the total percentages.

Referred visits are those medical clinic encounters seen as a result of a referral made by a number of sources including but not limited to CHS Health Triage Line, CHS Patient Relations, other CHS staff, or DOC's sick call process.

N/A = Not Applicable

IV. EMTC

| | | |
|----------|--|----------|
| 1 | CHS Intakes (New Jail Admissions) | N |
| 1.1 | Completed CHS Intakes | 1713 |
| 1.2 | Average time to completion once known to CHS (hours) | 3.7 |

| | | |
|----------|--|----------|
| 2 | Referrals made to mental health service | N |
| 2.1 | Referrals made to mental health service | 768 |
| 2.2 | Referrals seen within 72 hours | 662 |
| 2.3 | Percent seen within 72 hours | 86% |

| | Scheduled Services | Medical | | Nursing | | Mental Health | | Reentry Services | | Dental/Oral Surgery | | Specialty Clinic - On Island | | Specialty Clinic - Off Island | | Substance Use | | Total | |
|---------------------------------|-------------------------|-------------|---------------|-------------|-------------|---------------|-------------|------------------|------------|---------------------|--------------|------------------------------|-------------|-------------------------------|------------|---------------|----------------|-------------|-----|
| | | N | % | N | % | N | % | N | % | N | % | N | % | N | % | N | % | N | % |
| 3 | Service Outcomes | | | | | | | | | | | | | | | | | | |
| | Seen | 222 | 33% | 4213 | 63% | 1850 | 54% | 1555 | 76% | 224 | 67% | 118 | 36% | * | ND | 738 | 85% | 8920 | 62% |
| | Refused & Verified | 32 | 5% | 750 | 11% | 14 | 0% | 225 | 11% | 45 | 13% | * | ND | 0 | 0% | 0 | 0% | 1066 | 7% |
| | Not Produced | 414 | 62% | 1673 | 25% | 1060 | 31% | 251 | 12% | 65 | 19% | 212 | 64% | 43 | ND | 128 | 15% | 3846 | 27% |
| | Rescheduled by CHS | * | ND | * | ND | 517 | 15% | 10 | 0% | 0 | 0% | 0 | 0% | * | ND | 0 | 0% | 527 | 4% |
| | Rescheduled by Hospital | N/A | N/A | N/A | N/A | N/A | N/A | N/A | N/A | N/A | N/A | N/A | N/A | * | ND | N/A | N/A | 0** | ND |
| Total Scheduled Services | 668** | 100% | 6636** | 100% | 3441 | 100% | 2041 | 100% | 334 | 100% | 330** | 100% | 43** | 100% | 866 | 100% | 14359** | 100% | |

| 4 | Outcome Metrics | Medical | Nursing | Mental Health | Reentry Services | Dental/Oral Surgery | Specialty Clinic - On Island | Specialty Clinic - Off Island | Substance Use | Total |
|----------|------------------------|----------------|----------------|----------------------|-------------------------|----------------------------|-------------------------------------|--------------------------------------|----------------------|--------------|
| 4.1 | Percent completed | 38% | 75% | 54% | 87% | 81% | 36% | ND | 85% | 70% |

| | | |
|----------|------------------------|----------|
| 5 | Referred Visits | N |
| 5.1 | Referred Visits | 779 |

Notes:

* Table cells with 10 or fewer patients are represented with an asterisk to mask patient identity and protected health information (PHI). Cells with 0 patients are not masked.

**Masked numbers are not included in row or column totals or in percentage calculations.

ND = Not Depicted. We are not showing percentages for service outcomes (Table 3) or Percent Completed (Table 4) when the total patient number is 10 or fewer (unless the number is 0) or when masking numbers alters these percentages by more than 3%. These percentages are also not included in the total percentages.

Referred visits are those medical clinic encounters seen as a result of a referral made by a number of sources including but not limited to CHS Health Triage Line, CHS Patient Relations, other CHS staff, or DOC's sick call process.

N/A = Not Applicable

V. GRVC

| | | |
|------------|--|----------|
| 1 | CHS Intakes (New Jail Admissions) | N |
| 1.1 | Completed CHS Intakes | 38 |
| 1.2 | Average time to completion once known to CHS (hours) | 2.8 |

| | | |
|------------|--|----------|
| 2 | Referrals made to mental health service | N |
| 2.1 | Referrals made to mental health service | 34 |
| 2.2 | Referrals seen within 72 hours | 33 |
| 2.3 | Percent seen within 72 hours | 97% |

| 3 | Scheduled Services | Medical | | Nursing | | Mental Health | | Reentry Services | | Dental/Oral Surgery | | Specialty Clinic - On Island | | Specialty Clinic - Off Island | | Substance Use | | Total | |
|---|---------------------------------|--------------|-------------|-------------|-------------|---------------|-------------|------------------|-------------|---------------------|-------------|------------------------------|-------------|-------------------------------|-------------|---------------|-------------|----------------|-------------|
| | Service Outcomes | N | % | N | % | N | % | N | % | N | % | N | % | N | % | N | % | N | % |
| | Seen | 124 | 50% | 2555 | 63% | 3498 | 69% | 644 | 79% | 115 | 33% | 94 | 31% | 36 | ND | 109 | ND | 7175 | 65% |
| | Refused & Verified | 19 | 8% | 560 | 14% | * | ND | 78 | 10% | * | ND | 0 | 0% | * | ND | 0 | 0% | 657** | 6% |
| | Not Produced | 107 | 43% | 963 | 24% | 986 | 20% | 90 | 11% | 229 | 67% | 210 | 69% | 40 | ND | * | ND | 2625** | 24% |
| | Rescheduled by CHS | * | ND | 0 | 0% | 567 | 11% | * | ND | * | ND | 0 | 0% | * | ND | 0 | 0% | 567** | 5% |
| | Rescheduled by Hospital | N/A | N/A | N/A | N/A | N/A | N/A | N/A | N/A | N/A | N/A | N/A | N/A | * | ND | N/A | N/A | 0** | ND |
| | Total Scheduled Services | 250** | 100% | 4078 | 100% | 5051** | 100% | 812** | 100% | 344** | 100% | 304 | 100% | 76** | 100% | 109** | 100% | 11024** | 100% |

| 4 | Outcome Metrics | Medical | Nursing | Mental Health | Reentry Services | Dental/Oral Surgery | Specialty Clinic - On Island | Specialty Clinic - Off Island | Substance Use | Total |
|------------|-------------------|---------|---------|---------------|------------------|---------------------|------------------------------|-------------------------------|---------------|-------|
| 4.1 | Percent completed | 57% | 76% | 69% | 89% | 33% | 31% | ND | ND | 71% |

| | | |
|------------|------------------------|----------|
| 5 | Referred Visits | N |
| 5.1 | Referred Visits | 441 |

Notes:

* Table cells with 10 or fewer patients are represented with an asterisk to mask patient identity and protected health information (PHI). Cells with 0 patients are not masked.

**Masked numbers are not included in row or column totals or in percentage calculations.

ND = Not Depicted. We are not showing percentages for service outcomes (Table 3) or Percent Completed (Table 4) when the total patient number is 10 or fewer (unless the number is 0) or when masking numbers alters these percentages by more than 3%. These percentages are also not included in the total percentages.

Referred visits are those medical clinic encounters seen as a result of a referral made by a number of sources including but not limited to CHS Health Triage Line, CHS Patient Relations, other CHS staff, or DOC's sick call process.

N/A = Not Applicable

VI. NIC

| | | |
|------------|--|----------|
| 1 | CHS Intakes (New Jail Admissions) | N |
| 1.1 | Completed CHS Intakes | 0 |
| 1.2 | Average time to completion once known to CHS (hours) | N/A |

| | | |
|------------|--|----------|
| 2 | Referrals made to mental health service | N |
| 2.1 | Referrals made to mental health service | * |
| 2.2 | Referrals seen within 72 hours | * |
| 2.3 | Percent seen within 72 hours | ND |

| | Scheduled Services | Medical | | Nursing | | Mental Health | | Reentry Services | | Dental/Oral Surgery | | Specialty Clinic - On Island | | Specialty Clinic - Off Island | | Substance Use | | Total | |
|---------------------------------|-------------------------|-------------|-------------|-------------|--------------|---------------|--------------|------------------|-----------|---------------------|------------|------------------------------|--------------|-------------------------------|-------------|---------------|---------------|-------------|-----|
| | | N | % | N | % | N | % | N | % | N | % | N | % | N | % | N | % | N | % |
| 3 | Service Outcomes | | | | | | | | | | | | | | | | | | |
| | Seen | 127 | 49% | 6861 | 92% | 467 | 69% | 147 | 76% | 45 | 51% | 286 | 60% | 94 | ND | 64 | 100% | 8091 | 86% |
| | Refused & Verified | 43 | 17% | 376 | 5% | * | ND | 12 | 6% | 21 | 24% | 70 | 15% | 23 | ND | 0 | 0% | 545** | 6% |
| | Not Produced | 38 | 15% | 243 | 3% | 129 | 19% | 34 | 18% | 22 | 25% | 102 | 22% | 34 | ND | * | ND | 602** | 6% |
| | Rescheduled by CHS | 52 | 20% | 0 | 0% | 84 | 12% | * | ND | 0 | 0% | 16 | 3% | * | ND | 0 | 0% | 152** | 2% |
| | Rescheduled by Hospital | N/A | N/A | N/A | N/A | N/A | N/A | N/A | N/A | N/A | N/A | N/A | N/A | * | ND | N/A | N/A | 0** | ND |
| Total Scheduled Services | 260 | 100% | 7480 | 100% | 680** | 100% | 193** | 100% | 88 | 100% | 474 | 100% | 151** | 100% | 64** | 100% | 9390** | 100% | |

| | Outcome Metrics | Medical | Nursing | Mental Health | Reentry Services | Dental/Oral Surgery | Specialty Clinic - On Island | Specialty Clinic - Off Island | Substance Use | Total |
|------------|-------------------|---------|---------|---------------|------------------|---------------------|------------------------------|-------------------------------|---------------|-------|
| 4.1 | Percent completed | 65% | 97% | 69% | 82% | 75% | 75% | ND | 100% | 92% |

| | | |
|------------|------------------------|----------|
| 5 | Referred Visits | N |
| 5.1 | Referred Visits | 341 |

Notes:

* Table cells with 10 or fewer patients are represented with an asterisk to mask patient identity and protected health information (PHI). Cells with 0 patients are not masked.

**Masked numbers are not included in row or column totals or in percentage calculations.

ND = Not Depicted. We are not showing percentages for service outcomes (Table 3) or Percent Completed (Table 4) when the total patient number is 10 or fewer (unless the number is 0) or when masking numbers alters these percentages by more than 3%. These percentages are also not included in the total percentages.

Referred visits are those medical clinic encounters seen as a result of a referral made by a number of sources including but not limited to CHS Health Triage Line, CHS Patient Relations, other CHS staff, or DOC's sick call process.

N/A = Not Applicable

VII. OBCC

| | | |
|----------|--|----------|
| 1 | CHS Intakes (New Jail Admissions) | N |
| 1.1 | Completed CHS Intakes | 0 |
| 1.2 | Average time to completion once known to CHS (hours) | N/A |

| | | |
|----------|--|----------|
| 2 | Referrals made to mental health service | N |
| 2.1 | Referrals made to mental health service | 0 |
| 2.2 | Referrals seen within 72 hours | N/A |
| 2.3 | Percent seen within 72 hours | N/A |

| 3 | Scheduled Services | Medical | | Nursing | | Mental Health | | Reentry Services | | Dental/Oral Surgery | | Specialty Clinic - On Island | | Specialty Clinic - Off Island | | Substance Use | | Total | |
|---|---------------------------------|--------------|-------------|---------------|-------------|---------------|-------------|------------------|-------------|---------------------|-------------|------------------------------|-------------|-------------------------------|-------------|---------------|-------------|---------------|-------------|
| | Service Outcomes | N | % | N | % | N | % | N | % | N | % | N | % | N | % | N | % | N | % |
| | Seen | 100 | 18% | 1182 | 34% | 2170 | 58% | 486 | 65% | 330 | 58% | 183 | 38% | 50 | ND | 185 | 83% | 4686 | 48% |
| | Refused & Verified | 45 | 8% | 76 | 2% | * | ND | 57 | 8% | 32 | 6% | 51 | 11% | * | ND | 0 | 0% | 261** | 3% |
| | Not Produced | 406 | 74% | 2187 | 63% | 966 | 26% | 190 | 25% | 204 | 36% | 251 | 52% | 66 | ND | 37 | 17% | 4307 | 44% |
| | Rescheduled by CHS | * | ND | * | ND | 591 | 16% | 15 | 2% | 0 | 0% | 0 | 0% | * | ND | 0 | 0% | 606** | 6% |
| | Rescheduled by Hospital | N/A | N/A | N/A | N/A | N/A | N/A | N/A | N/A | N/A | N/A | N/A | N/A | * | ND | N/A | N/A | 0** | 0% |
| | Total Scheduled Services | 551** | 100% | 3445** | 100% | 3727** | 100% | 748 | 100% | 566 | 100% | 485 | 100% | 116** | 100% | 222 | 100% | 9860** | 100% |

| 4 | Outcome Metrics | Medical | Nursing | Mental Health | Reentry Services | Dental/Oral Surgery | Specialty Clinic - On Island | Specialty Clinic - Off Island | Substance Use | Total |
|-----|-------------------|---------|---------|---------------|------------------|---------------------|------------------------------|-------------------------------|---------------|-------|
| 4.1 | Percent completed | 26% | 37% | 58% | 73% | 64% | 48% | ND | 83% | 50% |

| | | |
|----------|------------------------|----------|
| 5 | Referred Visits | N |
| 5.1 | Referred Visits | 674 |

Notes:

* Table cells with 10 or fewer patients are represented with an asterisk to mask patient identity and protected health information (PHI). Cells with 0 patients are not masked.

**Masked numbers are not included in row or column totals or in percentage calculations.

ND = Not Depicted. We are not showing percentages for service outcomes (Table 3) or Percent Completed (Table 4) when the total patient number is 10 or fewer (unless the number is 0) or when masking numbers alters these percentages by more than 3%. These percentages are also not included in the total percentages.

Referred visits are those medical clinic encounters seen as a result of a referral made by a number of sources including but not limited to CHS Health Triage Line, CHS Patient Relations, other CHS staff, or DOC's sick call process.

N/A = Not Applicable

VIII. RESH

| | | |
|------------|--|----------|
| 1 | CHS Intakes (New Jail Admissions) | N |
| 1.1 | Completed CHS Intakes | 0 |
| 1.2 | Average time to completion once known to CHS (hours) | N/A |

| | | |
|------------|--|----------|
| 2 | Referrals made to mental health service | N |
| 2.1 | Referrals made to mental health service | 0 |
| 2.2 | Referrals seen within 72 hours | N/A |
| 2.3 | Percent seen within 72 hours | N/A |

| 3 | Scheduled Services | Medical | | Nursing | | Mental Health | | Reentry Services | | Dental/Oral Surgery | | Specialty Clinic - On Island | | Specialty Clinic - Off Island | | Substance Use | | Total | |
|---|---------------------------------|-------------|-------------|--------------|-------------|---------------|-------------|------------------|-------------|---------------------|-------------|------------------------------|-------------|-------------------------------|-----------|---------------|-----------|---------------|-------------|
| | Service Outcomes | N | % | N | % | N | % | N | % | N | % | N | % | N | % | N | % | N | % |
| | Seen | 17 | ND | 316 | 38% | 164 | 39% | 18 | ND | 21 | 34% | 12 | ND | * | ND | * | ND | 548** | 37% |
| | Refused & Verified | * | ND | 38 | 5% | 0 | 0% | * | ND | 13 | 21% | * | ND | * | ND | 0 | 0% | 51** | 3% |
| | Not Produced | 0 | 0% | 488 | 58% | 197 | 47% | 18 | ND | 28 | 45% | 83 | ND | * | ND | 0 | 0% | 814** | 55% |
| | Rescheduled by CHS | 0 | 0% | * | ND | 59 | 14% | * | ND | 0 | 0% | 0 | 0% | * | ND | 0 | 0% | 59** | 4% |
| | Rescheduled by Hospital | N/A | N/A | N/A | N/A | N/A | N/A | N/A | N/A | N/A | N/A | N/A | N/A | * | ND | N/A | N/A | 0** | ND |
| | Total Scheduled Services | 17** | 100% | 842** | 100% | 420 | 100% | 36** | 100% | 62 | 100% | 95** | 100% | 0** | 0% | 0** | 0% | 1472** | 100% |

| 4 | Outcome Metrics | Medical | Nursing | Mental Health | Reentry Services | Dental/Oral Surgery | Specialty Clinic - On Island | Specialty Clinic - Off Island | Substance Use | Total |
|------------|-------------------|---------|---------|---------------|------------------|---------------------|------------------------------|-------------------------------|---------------|-------|
| 4.1 | Percent completed | ND | 42% | 39% | ND | 55% | ND | ND | ND | 41% |

| | | |
|------------|------------------------|----------|
| 5 | Referred Visits | N |
| 5.1 | Referred Visits | 388 |

Notes:

* Table cells with 10 or fewer patients are represented with an asterisk to mask patient identity and protected health information (PHI). Cells with 0 patients are not masked.

**Masked numbers are not included in row or column totals or in percentage calculations.

ND = Not Depicted. We are not showing percentages for service outcomes (Table 3) or Percent Completed (Table 4) when the total patient number is 10 or fewer (unless the number is 0) or when masking numbers alters these percentages by more than 3%. These percentages are also not included in the total percentages.

Referred visits are those medical clinic encounters seen as a result of a referral made by a number of sources including but not limited to CHS Health Triage Line, CHS Patient Relations, other CHS staff, or DOC's sick call process.

N/A = Not Applicable

IX. RMSC

| | | |
|------------|--|----------|
| 1 | CHS Intakes (New Jail Admissions) | N |
| 1.1 | Completed CHS Intakes | 176 |
| 1.2 | Average time to completion once known to CHS (hours) | 6.9 |

| | | |
|------------|--|----------|
| 2 | Referrals made to mental health service | N |
| 2.1 | Referrals made to mental health service | 93 |
| 2.2 | Referrals seen within 72 hours | 83 |
| 2.3 | Percent seen within 72 hours | 89% |

| 3 | Scheduled Services | Medical | | Nursing | | Mental Health | | Reentry Services | | Dental/Oral Surgery | | Specialty Clinic - On Island | | Specialty Clinic - Off Island | | Substance Use | | Total | |
|---|---------------------------------|------------|-------------|-------------|-------------|---------------|-------------|------------------|-------------|---------------------|-------------|------------------------------|-------------|-------------------------------|-------------|---------------|-------------|---------------|-------------|
| | Service Outcomes | N | % | N | % | N | % | N | % | N | % | N | % | N | % | N | % | N | % |
| | Seen | 309 | 63% | 2005 | 66% | 1188 | 59% | 683 | 77% | 103 | 45% | 261 | 48% | 24 | ND | 218 | 85% | 4791 | 64% |
| | Refused & Verified | 20 | 4% | 205 | 7% | * | ND | 61 | 7% | 14 | 6% | 30 | 6% | * | ND | 0 | 0% | 330** | 4% |
| | Not Produced | 145 | 30% | 823 | 27% | 533 | 27% | 142 | 16% | 110 | 48% | 252 | 46% | 28 | ND | 37 | 15% | 2070** | 28% |
| | Rescheduled by CHS | 15 | 3% | 16 | 1% | 283 | 14% | * | ND | 0 | 0% | * | ND | * | ND | * | ND | 314** | 4% |
| | Rescheduled by Hospital | N/A | N/A | N/A | N/A | N/A | N/A | N/A | N/A | N/A | N/A | N/A | N/A | * | ND | N/A | N/A | 0** | ND |
| | Total Scheduled Services | 489 | 100% | 3049 | 100% | 2004** | 100% | 886** | 100% | 227 | 100% | 543** | 100% | 52** | 100% | 255** | 100% | 7505** | 100% |

| 4 | Outcome Metrics | Medical | Nursing | Mental Health | Reentry Services | Dental/Oral Surgery | Specialty Clinic - On Island | Specialty Clinic - Off Island | Substance Use | Total |
|------------|-------------------|---------|---------|---------------|------------------|---------------------|------------------------------|-------------------------------|---------------|-------|
| 4.1 | Percent completed | 67% | 72% | 59% | 84% | 52% | 54% | ND | 85% | 68% |

| | | |
|------------|------------------------|----------|
| 5 | Referred Visits | N |
| 5.1 | Referred Visits | 629 |

Notes:

* Table cells with 10 or fewer patients are represented with an asterisk to mask patient identity and protected health information (PHI). Cells with 0 patients are not masked.

**Masked numbers are not included in row or column totals or in percentage calculations.

ND = Not Depicted. We are not showing percentages for service outcomes (Table 3) or Percent Completed (Table 4) when the total patient number is 10 or fewer (unless the number is 0) or when masking numbers alters these percentages by more than 3%. These percentages are also not included in the total percentages.

Referred visits are those medical clinic encounters seen as a result of a referral made by a number of sources including but not limited to CHS Health Triage Line, CHS Patient Relations, other CHS staff, or DOC's sick call process.

N/A = Not Applicable

X. RNDC

| | | |
|----------|--|----------|
| 1 | CHS Intakes (New Jail Admissions) | N |
| 1.1 | Completed CHS Intakes | 0 |
| 1.2 | Average time to completion once known to CHS (hours) | N/A |

| | | |
|----------|--|----------|
| 2 | Referrals made to mental health service | N |
| 2.1 | Referrals made to mental health service | 0 |
| 2.2 | Referrals seen within 72 hours | N/A |
| 2.3 | Percent seen within 72 hours | N/A |

| 3 | Scheduled Services | Medical | | Nursing | | Mental Health | | Reentry Services | | Dental/Oral Surgery | | Specialty Clinic - On Island | | Specialty Clinic - Off Island | | Substance Use | | Total | |
|---|---------------------------------|------------|-------------|-------------|-------------|---------------|-------------|------------------|-------------|---------------------|-------------|------------------------------|-------------|-------------------------------|-------------|---------------|-------------|---------------|-------------|
| | Service Outcomes | N | % | N | % | N | % | N | % | N | % | N | % | N | % | N | % | N | % |
| | Seen | 136 | 44% | 721 | 47% | 923 | 32% | 291 | 46% | 146 | 41% | 83 | 28% | 33 | ND | 145 | 91% | 2478 | 40% |
| | Refused & Verified | 73 | 24% | 97 | 6% | 31 | 1% | 42 | 7% | 16 | 5% | 94 | 32% | 11 | ND | 0 | 0% | 364 | 6% |
| | Not Produced | 85 | 28% | 700 | 46% | 1605 | 56% | 287 | 45% | 176 | 50% | 118 | 40% | 22 | ND | 15 | 9% | 3008 | 49% |
| | Rescheduled by CHS | 13 | 4% | 0 | 0% | 304 | 11% | 14 | 2% | 15 | 4% | 0 | 0% | * | ND | 0 | 0% | 346** | 6% |
| | Rescheduled by Hospital | N/A | N/A | N/A | N/A | N/A | N/A | N/A | N/A | N/A | N/A | N/A | N/A | * | ND | N/A | N/A | 0** | ND |
| | Total Scheduled Services | 307 | 100% | 1518 | 100% | 2863 | 100% | 634 | 100% | 353 | 100% | 295 | 100% | 66** | 100% | 160 | 100% | 6196** | 100% |

| 4 | Outcome Metrics | Medical | Nursing | Mental Health | Reentry Services | Dental/Oral Surgery | Specialty Clinic - On Island | Specialty Clinic - Off Island | Substance Use | Total |
|-----|-------------------|---------|---------|---------------|------------------|---------------------|------------------------------|-------------------------------|---------------|-------|
| 4.1 | Percent completed | 68% | 54% | 33% | 53% | 46% | 60% | ND | 91% | 46% |

| | | |
|----------|------------------------|----------|
| 5 | Referred Visits | N |
| 5.1 | Referred Visits | 397 |

Notes:

* Table cells with 10 or fewer patients are represented with an asterisk to mask patient identity and protected health information (PHI). Cells with 0 patients are not masked.

**Masked numbers are not included in row or column totals or in percentage calculations.

ND = Not Depicted. We are not showing percentages for service outcomes (Table 3) or Percent Completed (Table 4) when the total patient number is 10 or fewer (unless the number is 0) or when masking numbers alters these percentages by more than 3%. These percentages are also not included in the total percentages.

Referred visits are those medical clinic encounters seen as a result of a referral made by a number of sources including but not limited to CHS Health Triage Line, CHS Patient Relations, other CHS staff, or DOC's sick call process.

N/A = Not Applicable

XI. WF

| | | |
|------------|--|----------|
| 1 | CHS Intakes (New Jail Admissions) | N |
| 1.1 | Completed CHS Intakes | * |
| 1.2 | Average time to completion once known to CHS (hours) | 2.8 |

| | | |
|------------|--|----------|
| 2 | Referrals made to mental health service | N |
| 2.1 | Referrals made to mental health service | * |
| 2.2 | Referrals seen within 72 hours | * |
| 2.3 | Percent seen within 72 hours | ND |

| 3 | Scheduled Services | Medical | | Nursing | | Mental Health | | Reentry Services | | Dental/Oral Surgery | | Specialty Clinic - On Island | | Specialty Clinic - Off Island | | Substance Use | | Total | |
|---|---------------------------------|------------|-------------|-------------|-------------|---------------|-------------|------------------|-------------|---------------------|-------------|------------------------------|-------------|-------------------------------|-------------|---------------|-------------|---------------|-------------|
| | Service Outcomes | N | % | N | % | N | % | N | % | N | % | N | % | N | % | N | % | N | % |
| | Seen | 115 | 45% | 1741 | 76% | 445 | 41% | 171 | 74% | 40 | 53% | 108 | 48% | 40 | ND | 34 | ND | 2694 | 63% |
| | Refused & Verified | 41 | 16% | 232 | 10% | * | ND | * | ND | * | ND | * | ND | * | ND | * | ND | 273** | 6% |
| | Not Produced | 100 | 39% | 316 | 14% | 447 | 41% | 49 | 21% | 35 | 47% | 115 | 52% | 40 | ND | * | ND | 1102** | 26% |
| | Rescheduled by CHS | 0 | 0% | 0 | 0% | 197 | 18% | 11 | 5% | 0 | 0% | * | ND | * | ND | 0 | 0% | 208** | 5% |
| | Rescheduled by Hospital | N/A | N/A | N/A | N/A | N/A | N/A | N/A | N/A | N/A | N/A | N/A | N/A | * | ND | N/A | N/A | 0** | ND |
| | Total Scheduled Services | 256 | 100% | 2289 | 100% | 1089** | 100% | 231** | 100% | 75** | 100% | 223** | 100% | 80** | 100% | 34** | 100% | 4277** | 100% |

| 4 | Outcome Metrics | Medical | Nursing | Mental Health | Reentry Services | Dental/Oral Surgery | Specialty Clinic - On Island | Specialty Clinic - Off Island | Substance Use | Total |
|------------|-------------------|---------|---------|---------------|------------------|---------------------|------------------------------|-------------------------------|---------------|-------|
| 4.1 | Percent completed | 61% | 86% | 41% | 74% | 53% | 48% | ND | ND | 69% |

| | | |
|------------|------------------------|----------|
| 5 | Referred Visits | N |
| 5.1 | Referred Visits | 463 |

Notes:

* Table cells with 10 or fewer patients are represented with an asterisk to mask patient identity and protected health information (PHI). Cells with 0 patients are not masked.

**Masked numbers are not included in row or column totals or in percentage calculations.

ND = Not Depicted. We are not showing percentages for service outcomes (Table 3) or Percent Completed (Table 4) when the total patient number is 10 or fewer (unless the number is 0) or when masking numbers alters these percentages by more than 3%. These percentages are also not included in the total percentages.

Referred visits are those medical clinic encounters seen as a result of a referral made by a number of sources including but not limited to CHS Health Triage Line, CHS Patient Relations, other CHS staff, or DOC's sick call process.

N/A = Not Applicable

CHS Access Report: June 2024

Version: 7/18/2024

I. Table of Contents

| | | |
|-------|-------------------------|----|
| I. | Table of Contents | 2 |
| II. | Data Dictionary | 3 |
| III. | Summary Data | 4 |
| IV. | EMTC | 5 |
| V. | GRVC | 6 |
| VI. | NIC | 7 |
| VII. | OBCC | 8 |
| VIII. | RESH | 9 |
| IX. | RMSC | 10 |
| X. | RNDC | 11 |
| XI. | WF | 12 |

II. Data Dictionary

| 1 | CHS Intakes (New Jail Admissions) | Definition |
|-----|--|---|
| 1.1 | Completed CHS Intakes | Number of new jail admission intake encounters completed by CHS providers |
| 1.2 | Average time to completion once known to CHS (hours) | Number of hours between check-in by DOC and check-out by CHS for completed intake encounters (1.1) |
| 2 | Referrals made to mental health service | Definition |
| 2.1 | Referrals made to mental health service | All book and cases with an initial referral to mental health during intake in reporting month, excluding persons known to the mental health service. Facility-specific reports reference the housing facility at the time of the mental health referral was made. |
| 2.2 | Referrals seen within 72 hours | For all book and cases where an initial referral to mental health occurs in reporting month (2.1), total number of book and cases who had a mental health intake or psychiatric assessment where encounter date was <=72 hours from referral date. |
| 2.3 | Percent seen within 72 hours | 2.2 divided by 2.1 |
| 3 | Scheduled services by discipline with outcomes | Definition |
| | | <p>-Shows direct, scheduled service encounters, total overall and by discipline, and disaggregates by outcome category recorded (N, %). Excludes encounters scheduled for discharged patients.</p> <p>-Specialty Clinic-On-Island encounters are for the following specialties: Audiology, Cardiology, Dermatology, Dialysis, ENT, Gynecology, Hand Specialist, ID Specialist, Nephrology, Neurology, Optometry, Orthopedic, Podiatry, Post Partum, Pre-Natal, Rehab Physical Therapy, Reproduction, Surgery</p> <p>-Specialty Clinic-Off-Island encounters are for the following specialties: Audiology, Breast, Cardiology, Cardiovascular, Chest, Dermatology, Endocrinology, ENT, Gastroenterology, General Surgery, Gynecology, Hand, Hematology, ID/Virology, Neurosurgery, Oncology, Ophthalmology, Oral Surgery, Orthopedic, Pain Management, Plastic Surgery, Podiatry, Renal, Rheumatology, Trauma, Urology, Vascular</p> |
| 4 | Outcome Metrics | Definition |
| 4.1 | Percent completed | Sum of scheduled service outcomes "Seen" and "Refused & Verified" divided by "Total Scheduled Services" |
| 5 | Referred Visits | Definition |
| 5.1 | Referred Visits | Referred visits are those medical clinic encounters seen or with a CHS-documented refusal as a result of a referral made by a number of sources including but not limited to CHS Health Triage Line, CHS Patient Relations, other CHS staff, or DOC's sick call process. |

III. Summary Data

| | | |
|----------|--|----------|
| 1 | CHS Intakes (New Jail Admissions) | N |
| 1.1 | Completed CHS Intakes | 1853 |
| 1.2 | Average time to completion once known to CHS (hours) | 3.6 |

| | | |
|----------|--|----------|
| 2 | Referrals made to mental health service | N |
| 2.1 | Referrals made to mental health service | 828 |
| 2.2 | Referrals seen within 72 hours | 750 |
| 2.3 | Percent seen within 72 hours | 91% |

| 3 | Scheduled Services | Medical | | Nursing | | Mental Health | | Reentry Services | | Dental/Oral Surgery | | Specialty Clinic - On Island | | Specialty Clinic - Off Island | | Substance Use | | Total | |
|---|---------------------------------|-------------|-------------|--------------|-------------|---------------|-------------|------------------|-------------|---------------------|-------------|------------------------------|-------------|-------------------------------|-------------|---------------|-------------|----------------|-------------|
| | Service Outcomes | N | % | N | % | N | % | N | % | N | % | N | % | N | % | N | % | N | % |
| | Seen | 1164 | 42% | 18297 | 63% | 9429 | 54% | 3682 | 70% | 912 | 49% | 1027 | 46% | 235 | 37% | 1319 | 87% | 36065 | 60% |
| | Refused & Verified | 285 | 10% | 2297 | 8% | 56 | 0% | 425 | 8% | 161 | 9% | 140 | 6% | 38 | 6% | 0 | 0% | 3402 | 6% |
| | Not Produced | 1294 | 46% | 8251 | 29% | 5068 | 29% | 1051 | 20% | 789 | 42% | 1062 | 47% | 273 | 43% | 196 | 13% | 17984 | 30% |
| | Rescheduled by CHS | 48 | 2% | 16 | 0% | 2853 | 16% | 106 | 2% | * | ND | 28 | 1% | 28 | 4% | 0 | 0% | 3079** | 5% |
| | Rescheduled by Hospital | N/A | N/A | N/A | N/A | N/A | N/A | N/A | N/A | N/A | N/A | N/A | N/A | 62 | 10% | N/A | N/A | 62 | 0% |
| | Total Scheduled Services | 2791 | 100% | 28861 | 100% | 17406 | 100% | 5264 | 100% | 1862** | 100% | 2257 | 100% | 636 | 100% | 1515 | 100% | 60592** | 100% |

| 4 | Outcome Metrics | Medical | Nursing | Mental Health | Reentry Services | Dental/Oral Surgery | Specialty Clinic - On Island | Specialty Clinic - Off Island | Substance Use | Total |
|-----|-------------------|---------|---------|---------------|------------------|---------------------|------------------------------|-------------------------------|---------------|-------|
| 4.1 | Percent completed | 52% | 71% | 54% | 78% | 58% | 52% | 43% | 87% | 65% |

| | | |
|----------|------------------------|----------|
| 5 | Referred Visits | N |
| 5.1 | Referred Visits | 3765 |

Notes:

* Table cells with 10 or fewer patients are represented with an asterisk to mask patient identity and protected health information (PHI). Cells with 0 patients are not masked.

**Masked numbers are not included in row or column totals or in percentage calculations.

ND = Not Depicted. We are not showing percentages for service outcomes (Table 3) or Percent Completed (Table 4) when the total patient number is 10 or fewer (unless the number is 0) or when masking numbers alters these percentages by more than 3%. These percentages are also not included in the total percentages.

Referred visits are those medical clinic encounters seen as a result of a referral made by a number of sources including but not limited to CHS Health Triage Line, CHS Patient Relations, other CHS staff, or DOC's sick call process.

N/A = Not Applicable

IV. EMTCC

| | | |
|----------|--|----------|
| 1 | CHS Intakes (New Jail Admissions) | N |
| 1.1 | Completed CHS Intakes | 1664 |
| 1.2 | Average time to completion once known to CHS (hours) | 3.6 |

| | | |
|----------|--|----------|
| 2 | Referrals made to mental health service | N |
| 2.1 | Referrals made to mental health service | 720 |
| 2.2 | Referrals seen within 72 hours | 652 |
| 2.3 | Percent seen within 72 hours | 91% |

| | Scheduled Services | Medical | | Nursing | | Mental Health | | Reentry Services | | Dental/Oral Surgery | | Specialty Clinic - On Island | | Specialty Clinic - Off Island | | Substance Use | | Total | |
|----------|---------------------------------|--------------|-------------|---------------|-------------|---------------|-------------|------------------|-------------|---------------------|-------------|------------------------------|-------------|-------------------------------|-------------|---------------|-------------|----------------|-------------|
| | | N | % | N | % | N | % | N | % | N | % | N | % | N | % | N | % | N | % |
| 3 | Service Outcomes | | | | | | | | | | | | | | | | | | |
| | Seen | 176 | 29% | 3974 | 60% | 1685 | 57% | 1420 | 78% | 214 | 64% | 63 | 25% | 10 | ND | 658 | 85% | 8200 | 61% |
| | Refused & Verified | 46 | 8% | 724 | 11% | 18 | 1% | 193 | 11% | 56 | 17% | * | ND | 0 | 0% | 0 | 0% | 1037** | 8% |
| | Not Produced | 388 | 64% | 1963 | 29% | 624 | 21% | 180 | 10% | 63 | 19% | 188 | 75% | 33 | ND | 114 | 15% | 3553 | 26% |
| | Rescheduled by CHS | * | ND | * | ND | 634 | 21% | 17 | 1% | * | ND | 0 | 0% | 0 | 0% | 0 | 0% | 651** | 5% |
| | Rescheduled by Hospital | N/A | N/A | N/A | N/A | N/A | N/A | N/A | N/A | N/A | N/A | N/A | N/A | * | ND | N/A | N/A | 0** | ND |
| | Total Scheduled Services | 610** | 100% | 6661** | 100% | 2961 | 100% | 1810 | 100% | 333** | 100% | 251** | 100% | 43** | 100% | 772 | 100% | 13441** | 100% |

| | Outcome Metrics | Medical | Nursing | Mental Health | Reentry Services | Dental/Oral Surgery | Specialty Clinic - On Island | Specialty Clinic - Off Island | Substance Use | Total |
|----------|--------------------------|---------|---------|---------------|------------------|---------------------|------------------------------|-------------------------------|---------------|-------|
| 4 | Percent completed | 36% | 71% | 58% | 89% | 81% | 25% | ND | 85% | 69% |

| | | |
|----------|------------------------|----------|
| 5 | Referred Visits | N |
| 5.1 | Referred Visits | 724 |

Notes:

* Table cells with 10 or fewer patients are represented with an asterisk to mask patient identity and protected health information (PHI). Cells with 0 patients are not masked.

**Masked numbers are not included in row or column totals or in percentage calculations.

ND = Not Depicted. We are not showing percentages for service outcomes (Table 3) or Percent Completed (Table 4) when the total patient number is 10 or fewer (unless the number is 0) or when masking numbers alters these percentages by more than 3%. These percentages are also not included in the total percentages.

Referred visits are those medical clinic encounters seen as a result of a referral made by a number of sources including but not limited to CHS Health Triage Line, CHS Patient Relations, other CHS staff, or DOC's sick call process.

N/A = Not Applicable

V. GRVC

| | | |
|------------|--|----------|
| 1 | CHS Intakes (New Jail Admissions) | N |
| 1.1 | Completed CHS Intakes | 38 |
| 1.2 | Average time to completion once known to CHS (hours) | 3.4 |

| | | |
|------------|--|----------|
| 2 | Referrals made to mental health service | N |
| 2.1 | Referrals made to mental health service | 34 |
| 2.2 | Referrals seen within 72 hours | 33 |
| 2.3 | Percent seen within 72 hours | 97% |

| 3 | Scheduled Services | Medical | | Nursing | | Mental Health | | Reentry Services | | Dental/Oral Surgery | | Specialty Clinic - On Island | | Specialty Clinic - Off Island | | Substance Use | | Total | |
|---|---------------------------------|--------------|-------------|---------------|-------------|---------------|-------------|------------------|-------------|---------------------|-------------|------------------------------|-------------|-------------------------------|-------------|---------------|-------------|----------------|-------------|
| | Service Outcomes | N | % | N | % | N | % | N | % | N | % | N | % | N | % | N | % | N | % |
| | Seen | 133 | 51% | 2615 | 61% | 2845 | 67% | 717 | 76% | 109 | 34% | 76 | 34% | 33 | 38% | 113 | 100% | 6641 | 63% |
| | Refused & Verified | 28 | 11% | 599 | 14% | * | ND | 78 | 8% | * | ND | * | ND | * | ND | 0 | 0% | 705** | 7% |
| | Not Produced | 98 | 38% | 1050 | 25% | 781 | 18% | 148 | 16% | 216 | 66% | 146 | 66% | 42 | 49% | * | ND | 2481** | 24% |
| | Rescheduled by CHS | * | ND | * | ND | 628 | 15% | * | ND | * | ND | 0 | 0% | * | ND | 0 | 0% | 628** | 6% |
| | Rescheduled by Hospital | N/A | N/A | N/A | N/A | N/A | N/A | N/A | N/A | N/A | N/A | N/A | N/A | 11 | 13% | N/A | N/A | 11 | 0% |
| | Total Scheduled Services | 259** | 100% | 4264** | 100% | 4254** | 100% | 943** | 100% | 325** | 100% | 222** | 100% | 86** | 100% | 113** | 100% | 10466** | 100% |

| 4 | Outcome Metrics | Medical | Nursing | Mental Health | Reentry Services | Dental/Oral Surgery | Specialty Clinic - On Island | Specialty Clinic - Off Island | Substance Use | Total |
|------------|-------------------|---------|---------|---------------|------------------|---------------------|------------------------------|-------------------------------|---------------|-------|
| 4.1 | Percent completed | 62% | 75% | 67% | 84% | 34% | 34% | 38% | 100% | 70% |

| | | |
|------------|------------------------|----------|
| 5 | Referred Visits | N |
| 5.1 | Referred Visits | 390 |

Notes:

* Table cells with 10 or fewer patients are represented with an asterisk to mask patient identity and protected health information (PHI). Cells with 0 patients are not masked.

**Masked numbers are not included in row or column totals or in percentage calculations.

ND = Not Depicted. We are not showing percentages for service outcomes (Table 3) or Percent Completed (Table 4) when the total patient number is 10 or fewer (unless the number is 0) or when masking numbers alters these percentages by more than 3%. These percentages are also not included in the total percentages.

Referred visits are those medical clinic encounters seen as a result of a referral made by a number of sources including but not limited to CHS Health Triage Line, CHS Patient Relations, other CHS staff, or DOC's sick call process.

N/A = Not Applicable

VI. NIC

| | | |
|------------|--|----------|
| 1 | CHS Intakes (New Jail Admissions) | N |
| 1.1 | Completed CHS Intakes | 0 |
| 1.2 | Average time to completion once known to CHS (hours) | N/A |

| | | |
|------------|--|----------|
| 2 | Referrals made to mental health service | N |
| 2.1 | Referrals made to mental health service | 0 |
| 2.2 | Referrals seen within 72 hours | N/A |
| 2.3 | Percent seen within 72 hours | N/A |

| | Scheduled Services | Medical | | Nursing | | Mental Health | | Reentry Services | | Dental/Oral Surgery | | Specialty Clinic - On Island | | Specialty Clinic - Off Island | | Substance Use | | Total | |
|---------------------------------|-------------------------|-------------|---------------|-------------|--------------|---------------|--------------|------------------|-----------|---------------------|------------|------------------------------|------------|-------------------------------|-------------|---------------|---------------|-------------|-----|
| | | N | % | N | % | N | % | N | % | N | % | N | % | N | % | N | % | N | % |
| 3 | Service Outcomes | | | | | | | | | | | | | | | | | | |
| | Seen | 160 | 62% | 6408 | 91% | 399 | 67% | 151 | 74% | 23 | 30% | 222 | 62% | 69 | 48% | 58 | ND | 7490 | 86% |
| | Refused & Verified | 37 | 14% | 366 | 5% | * | ND | * | ND | 36 | 47% | 51 | 14% | 18 | 13% | 0 | 0% | 508** | 6% |
| | Not Produced | 41 | 16% | 284 | 4% | 97 | 16% | 25 | 12% | 18 | 23% | 71 | 20% | 30 | 21% | * | ND | 566** | 6% |
| | Rescheduled by CHS | 20 | 8% | * | ND | 104 | 17% | 27 | 13% | 0 | 0% | 16 | 4% | 12 | 8% | 0 | 0% | 179** | 2% |
| | Rescheduled by Hospital | N/A | N/A | N/A | N/A | N/A | N/A | N/A | N/A | N/A | N/A | N/A | N/A | 14 | 10% | N/A | N/A | 14 | 0% |
| Total Scheduled Services | 258 | 100% | 7058** | 100% | 600** | 100% | 203** | 100% | 77 | 100% | 360 | 100% | 143 | 100% | 58** | 100% | 8757** | 100% | |

| 4 | Outcome Metrics | Medical | Nursing | Mental Health | Reentry Services | Dental/Oral Surgery | Specialty Clinic - On Island | Specialty Clinic - Off Island | Substance Use | Total |
|------------|------------------------|----------------|----------------|----------------------|-------------------------|----------------------------|-------------------------------------|--------------------------------------|----------------------|--------------|
| 4.1 | Percent completed | 76% | 96% | 67% | 74% | 77% | 76% | 61% | ND | 91% |

| | | |
|------------|------------------------|----------|
| 5 | Referred Visits | N |
| 5.1 | Referred Visits | 297 |

Notes:

* Table cells with 10 or fewer patients are represented with an asterisk to mask patient identity and protected health information (PHI). Cells with 0 patients are not masked.

**Masked numbers are not included in row or column totals or in percentage calculations.

ND = Not Depicted. We are not showing percentages for service outcomes (Table 3) or Percent Completed (Table 4) when the total patient number is 10 or fewer (unless the number is 0) or when masking numbers alters these percentages by more than 3%. These percentages are also not included in the total percentages.

Referred visits are those medical clinic encounters seen as a result of a referral made by a number of sources including but not limited to CHS Health Triage Line, CHS Patient Relations, other CHS staff, or DOC's sick call process.

N/A = Not Applicable

VII. OBCC

| | | |
|----------|--|----------|
| 1 | CHS Intakes (New Jail Admissions) | N |
| 1.1 | Completed CHS Intakes | 0 |
| 1.2 | Average time to completion once known to CHS (hours) | N/A |

| | | |
|----------|--|----------|
| 2 | Referrals made to mental health service | N |
| 2.1 | Referrals made to mental health service | 0 |
| 2.2 | Referrals seen within 72 hours | N/A |
| 2.3 | Percent seen within 72 hours | N/A |

| 3 | Scheduled Services | Medical | | Nursing | | Mental Health | | Reentry Services | | Dental/Oral Surgery | | Specialty Clinic - On Island | | Specialty Clinic - Off Island | | Substance Use | | Total | |
|---|---------------------------------|--------------|-------------|---------------|-------------|---------------|-------------|------------------|-------------|---------------------|-------------|------------------------------|-------------|-------------------------------|-------------|---------------|-------------|---------------|-------------|
| | Service Outcomes | N | % | N | % | N | % | N | % | N | % | N | % | N | % | N | % | N | % |
| | Seen | 110 | 20% | 1243 | 33% | 1941 | 54% | 351 | 58% | 255 | 54% | 118 | 41% | 39 | 33% | 196 | 86% | 4253 | 44% |
| | Refused & Verified | 26 | 5% | 38 | 1% | * | ND | 38 | 6% | 27 | 6% | * | ND | * | ND | 0 | 0% | 129** | 1% |
| | Not Produced | 421 | 76% | 2520 | 66% | 992 | 28% | 194 | 32% | 190 | 40% | 167 | 59% | 68 | 57% | 33 | 14% | 4585 | 48% |
| | Rescheduled by CHS | * | ND | * | ND | 629 | 18% | 21 | 3% | 0 | 0% | 0 | 0% | * | ND | 0 | 0% | 650** | 7% |
| | Rescheduled by Hospital | N/A | N/A | N/A | N/A | N/A | N/A | N/A | N/A | N/A | N/A | N/A | N/A | 13 | 11% | N/A | N/A | 13 | 0% |
| | Total Scheduled Services | 557** | 100% | 3801** | 100% | 3562** | 100% | 604 | 100% | 472 | 100% | 285** | 100% | 120** | 100% | 229 | 100% | 9630** | 100% |

| 4 | Outcome Metrics | Medical | Nursing | Mental Health | Reentry Services | Dental/Oral Surgery | Specialty Clinic - On Island | Specialty Clinic - Off Island | Substance Use | Total |
|-----|-------------------|---------|---------|---------------|------------------|---------------------|------------------------------|-------------------------------|---------------|-------|
| 4.1 | Percent completed | 24% | 34% | 54% | 64% | 60% | 41% | 33% | 86% | 45% |

| | | |
|----------|------------------------|----------|
| 5 | Referred Visits | N |
| 5.1 | Referred Visits | 595 |

Notes:

* Table cells with 10 or fewer patients are represented with an asterisk to mask patient identity and protected health information (PHI). Cells with 0 patients are not masked.

**Masked numbers are not included in row or column totals or in percentage calculations.

ND = Not Depicted. We are not showing percentages for service outcomes (Table 3) or Percent Completed (Table 4) when the total patient number is 10 or fewer (unless the number is 0) or when masking numbers alters these percentages by more than 3%. These percentages are also not included in the total percentages.

Referred visits are those medical clinic encounters seen as a result of a referral made by a number of sources including but not limited to CHS Health Triage Line, CHS Patient Relations, other CHS staff, or DOC's sick call process.

N/A = Not Applicable

VIII. RESH

| | | |
|------------|--|----------|
| 1 | CHS Intakes (New Jail Admissions) | N |
| 1.1 | Completed CHS Intakes | 0 |
| 1.2 | Average time to completion once known to CHS (hours) | N/A |

| | | |
|------------|--|----------|
| 2 | Referrals made to mental health service | N |
| 2.1 | Referrals made to mental health service | 0 |
| 2.2 | Referrals seen within 72 hours | N/A |
| 2.3 | Percent seen within 72 hours | N/A |

| 3 | Scheduled Services | Medical | | Nursing | | Mental Health | | Reentry Services | | Dental/Oral Surgery | | Specialty Clinic - On Island | | Specialty Clinic - Off Island | | Substance Use | | Total | |
|---|---------------------------------|-------------|-------------|--------------|-------------|---------------|-------------|------------------|-------------|---------------------|-------------|------------------------------|-------------|-------------------------------|-----------|---------------|-----------|---------------|-------------|
| | Service Outcomes | N | % | N | % | N | % | N | % | N | % | N | % | N | % | N | % | N | % |
| | Seen | 25 | ND | 196 | 24% | 116 | 32% | 84 | 88% | 14 | 30% | 26 | 23% | * | ND | * | ND | 461** | 31% |
| | Refused & Verified | * | ND | 30 | 4% | 0 | 0% | * | ND | 0 | 0% | * | ND | 0 | 0% | 0 | 0% | 30** | 2% |
| | Not Produced | 10 | ND | 581 | 72% | 156 | 42% | 11 | 12% | 32 | 70% | 88 | 77% | * | ND | 0 | 0% | 878** | 60% |
| | Rescheduled by CHS | 0 | 0% | * | ND | 96 | 26% | 0 | 0% | 0 | 0% | 0 | 0% | * | ND | 0 | 0% | 96** | 7% |
| | Rescheduled by Hospital | N/A | N/A | N/A | N/A | N/A | N/A | N/A | N/A | N/A | N/A | N/A | N/A | * | ND | N/A | N/A | 0** | ND |
| | Total Scheduled Services | 35** | 100% | 807** | 100% | 368 | 100% | 95** | 100% | 46 | 100% | 114** | 100% | 0** | 0% | 0** | 0% | 1465** | 100% |

| 4 | Outcome Metrics | Medical | Nursing | Mental Health | Reentry Services | Dental/Oral Surgery | Specialty Clinic - On Island | Specialty Clinic - Off Island | Substance Use | Total |
|------------|-------------------|---------|---------|---------------|------------------|---------------------|------------------------------|-------------------------------|---------------|-------|
| 4.1 | Percent completed | ND | 28% | 32% | 88% | 30% | 23% | ND | ND | 33% |

| | | |
|------------|------------------------|----------|
| 5 | Referred Visits | N |
| 5.1 | Referred Visits | 335 |

Notes:

* Table cells with 10 or fewer patients are represented with an asterisk to mask patient identity and protected health information (PHI). Cells with 0 patients are not masked.

**Masked numbers are not included in row or column totals or in percentage calculations.

ND = Not Depicted. We are not showing percentages for service outcomes (Table 3) or Percent Completed (Table 4) when the total patient number is 10 or fewer (unless the number is 0) or when masking numbers alters these percentages by more than 3%. These percentages are also not included in the total percentages.

Referred visits are those medical clinic encounters seen as a result of a referral made by a number of sources including but not limited to CHS Health Triage Line, CHS Patient Relations, other CHS staff, or DOC's sick call process.

N/A = Not Applicable

IX. RMSC

| | | |
|----------|--|----------|
| 1 | CHS Intakes (New Jail Admissions) | N |
| 1.1 | Completed CHS Intakes | 147 |
| 1.2 | Average time to completion once known to CHS (hours) | 4.6 |

| | | |
|----------|--|----------|
| 2 | Referrals made to mental health service | N |
| 2.1 | Referrals made to mental health service | 72 |
| 2.2 | Referrals seen within 72 hours | 65 |
| 2.3 | Percent seen within 72 hours | 90% |

| 3 | Scheduled Services | Medical | | Nursing | | Mental Health | | Reentry Services | | Dental/Oral Surgery | | Specialty Clinic - On Island | | Specialty Clinic - Off Island | | Substance Use | | Total | |
|---|---------------------------------|------------|-------------|---------------|-------------|---------------|-------------|------------------|-------------|---------------------|-------------|------------------------------|-------------|-------------------------------|-------------|---------------|-------------|---------------|-------------|
| | Service Outcomes | N | % | N | % | N | % | N | % | N | % | N | % | N | % | N | % | N | % |
| | Seen | 278 | 64% | 1535 | 60% | 1289 | 64% | 569 | 77% | 113 | 51% | 339 | 60% | 16 | ND | 155 | 89% | 4294 | 63% |
| | Refused & Verified | 44 | 10% | 231 | 9% | * | ND | 45 | 6% | 14 | 6% | 21 | 4% | * | ND | 0 | 0% | 355** | 5% |
| | Not Produced | 100 | 23% | 809 | 31% | 527 | 26% | 127 | 17% | 93 | 42% | 205 | 36% | 31 | ND | 20 | 11% | 1912 | 28% |
| | Rescheduled by CHS | 13 | 3% | * | ND | 203 | 10% | * | ND | 0 | 0% | * | ND | * | ND | 0 | 0% | 216** | 3% |
| | Rescheduled by Hospital | N/A | N/A | N/A | N/A | N/A | N/A | N/A | N/A | N/A | N/A | N/A | N/A | * | ND | N/A | N/A | 0** | ND |
| | Total Scheduled Services | 435 | 100% | 2575** | 100% | 2019** | 100% | 741** | 100% | 220 | 100% | 565** | 100% | 47** | 100% | 175 | 100% | 6777** | 100% |

| 4 | Outcome Metrics | Medical | Nursing | Mental Health | Reentry Services | Dental/Oral Surgery | Specialty Clinic - On Island | Specialty Clinic - Off Island | Substance Use | Total |
|-----|-------------------|---------|---------|---------------|------------------|---------------------|------------------------------|-------------------------------|---------------|-------|
| 4.1 | Percent completed | 74% | 69% | 64% | 83% | 58% | 64% | ND | 89% | 69% |

| | | |
|----------|------------------------|----------|
| 5 | Referred Visits | N |
| 5.1 | Referred Visits | 632 |

Notes:

* Table cells with 10 or fewer patients are represented with an asterisk to mask patient identity and protected health information (PHI). Cells with 0 patients are not masked.

**Masked numbers are not included in row or column totals or in percentage calculations.

ND = Not Depicted. We are not showing percentages for service outcomes (Table 3) or Percent Completed (Table 4) when the total patient number is 10 or fewer (unless the number is 0) or when masking numbers alters these percentages by more than 3%. These percentages are also not included in the total percentages.

Referred visits are those medical clinic encounters seen as a result of a referral made by a number of sources including but not limited to CHS Health Triage Line, CHS Patient Relations, other CHS staff, or DOC's sick call process.

N/A = Not Applicable

X. RNDC

| | | |
|----------|--|----------|
| 1 | CHS Intakes (New Jail Admissions) | N |
| 1.1 | Completed CHS Intakes | 0 |
| 1.2 | Average time to completion once known to CHS (hours) | N/A |

| | | |
|----------|--|----------|
| 2 | Referrals made to mental health service | N |
| 2.1 | Referrals made to mental health service | 0 |
| 2.2 | Referrals seen within 72 hours | N/A |
| 2.3 | Percent seen within 72 hours | N/A |

| 3 | Scheduled Services | Medical | | Nursing | | Mental Health | | Reentry Services | | Dental/Oral Surgery | | Specialty Clinic - On Island | | Specialty Clinic - Off Island | | Substance Use | | Total | |
|---|---------------------------------|--------------|-------------|-------------|-------------|---------------|-------------|------------------|-------------|---------------------|-------------|------------------------------|-------------|-------------------------------|-------------|---------------|-------------|---------------|-------------|
| | Service Outcomes | N | % | N | % | N | % | N | % | N | % | N | % | N | % | N | % | N | % |
| | Seen | 142 | 47% | 768 | 50% | 778 | 29% | 249 | 37% | 142 | 45% | 80 | 34% | 35 | ND | 110 | 85% | 2304 | 39% |
| | Refused & Verified | 67 | 22% | 66 | 4% | 12 | 0% | 53 | 8% | 21 | 7% | 52 | 22% | 11 | ND | 0 | 0% | 282 | 5% |
| | Not Produced | 95 | 31% | 711 | 46% | 1554 | 57% | 345 | 52% | 153 | 48% | 103 | 44% | 24 | ND | 20 | 15% | 3005 | 50% |
| | Rescheduled by CHS | * | ND | 0 | 0% | 361 | 13% | 18 | 3% | 0 | 0% | * | ND | * | ND | 0 | 0% | 379** | 6% |
| | Rescheduled by Hospital | N/A | N/A | N/A | N/A | N/A | N/A | N/A | N/A | N/A | N/A | N/A | N/A | * | ND | N/A | N/A | 0** | ND |
| | Total Scheduled Services | 304** | 100% | 1545 | 100% | 2705 | 100% | 665 | 100% | 316 | 100% | 235** | 100% | 70** | 100% | 130 | 100% | 5970** | 100% |

| 4 | Outcome Metrics | Medical | Nursing | Mental Health | Reentry Services | Dental/Oral Surgery | Specialty Clinic - On Island | Specialty Clinic - Off Island | Substance Use | Total |
|-----|-------------------|---------|---------|---------------|------------------|---------------------|------------------------------|-------------------------------|---------------|-------|
| 4.1 | Percent completed | 69% | 54% | 29% | 45% | 52% | 56% | ND | 85% | 44% |

| | | |
|----------|------------------------|----------|
| 5 | Referred Visits | N |
| 5.1 | Referred Visits | 359 |

Notes:

* Table cells with 10 or fewer patients are represented with an asterisk to mask patient identity and protected health information (PHI). Cells with 0 patients are not masked.

**Masked numbers are not included in row or column totals or in percentage calculations.

ND = Not Depicted. We are not showing percentages for service outcomes (Table 3) or Percent Completed (Table 4) when the total patient number is 10 or fewer (unless the number is 0) or when masking numbers alters these percentages by more than 3%. These percentages are also not included in the total percentages.

Referred visits are those medical clinic encounters seen as a result of a referral made by a number of sources including but not limited to CHS Health Triage Line, CHS Patient Relations, other CHS staff, or DOC's sick call process.

N/A = Not Applicable

XI. WF

| | | |
|------------|--|----------|
| 1 | CHS Intakes (New Jail Admissions) | N |
| 1.1 | Completed CHS Intakes | * |
| 1.2 | Average time to completion once known to CHS (hours) | 2.5 |

| | | |
|------------|--|----------|
| 2 | Referrals made to mental health service | N |
| 2.1 | Referrals made to mental health service | * |
| 2.2 | Referrals seen within 72 hours | * |
| 2.3 | Percent seen within 72 hours | ND |

| 3 | Scheduled Services | Medical | | Nursing | | Mental Health | | Reentry Services | | Dental/Oral Surgery | | Specialty Clinic - On Island | | Specialty Clinic - Off Island | | Substance Use | | Total | |
|---|---------------------------------|--------------|-------------|-------------|-------------|---------------|-------------|------------------|-------------|---------------------|-------------|------------------------------|-------------|-------------------------------|-------------|---------------|-------------|---------------|-------------|
| | Service Outcomes | N | % | N | % | N | % | N | % | N | % | N | % | N | % | N | % | N | % |
| | Seen | 140 | 45% | 1558 | 73% | 376 | 41% | 141 | 79% | 42 | 64% | 103 | 52% | 26 | ND | 21 | ND | 2407 | 62% |
| | Refused & Verified | 32 | 10% | 243 | 11% | * | ND | * | ND | 0 | 0% | 0 | 0% | * | ND | 0 | 0% | 275** | 7% |
| | Not Produced | 141 | 45% | 333 | 16% | 337 | 37% | 21 | 12% | 24 | 36% | 94 | 48% | 42 | ND | * | ND | 992** | 26% |
| | Rescheduled by CHS | * | ND | 0 | 0% | 198 | 22% | 17 | 9% | 0 | 0% | * | ND | * | ND | 0 | 0% | 215** | 6% |
| | Rescheduled by Hospital | N/A | N/A | N/A | N/A | N/A | N/A | N/A | N/A | N/A | N/A | N/A | N/A | * | ND | N/A | N/A | 0** | 0% |
| | Total Scheduled Services | 313** | 100% | 2134 | 100% | 911** | 100% | 179** | 100% | 66 | 100% | 197** | 100% | 68** | 100% | 21** | 100% | 3889** | 100% |

| 4 | Outcome Metrics | Medical | Nursing | Mental Health | Reentry Services | Dental/Oral Surgery | Specialty Clinic - On Island | Specialty Clinic - Off Island | Substance Use | Total |
|------------|-------------------|---------|---------|---------------|------------------|---------------------|------------------------------|-------------------------------|---------------|-------|
| 4.1 | Percent completed | 55% | 84% | 41% | 79% | 64% | 52% | ND | ND | 69% |

| | | |
|------------|------------------------|----------|
| 5 | Referred Visits | N |
| 5.1 | Referred Visits | 433 |

Notes:

* Table cells with 10 or fewer patients are represented with an asterisk to mask patient identity and protected health information (PHI). Cells with 0 patients are not masked.

**Masked numbers are not included in row or column totals or in percentage calculations.

ND = Not Depicted. We are not showing percentages for service outcomes (Table 3) or Percent Completed (Table 4) when the total patient number is 10 or fewer (unless the number is 0) or when masking numbers alters these percentages by more than 3%. These percentages are also not included in the total percentages.

Referred visits are those medical clinic encounters seen as a result of a referral made by a number of sources including but not limited to CHS Health Triage Line, CHS Patient Relations, other CHS staff, or DOC's sick call process.

N/A = Not Applicable

CHS Access Trends: April to June 2024

Version: 7/19/2024

I. Table of Contents

Contents

| | |
|----------------------------|----|
| I. Table of Contents | 2 |
| II. EMTC | 3 |
| III. GRVC..... | 4 |
| IV. NIC..... | 5 |
| V. OBCC..... | 6 |
| VI. RESH | 7 |
| VII. RMSC | 8 |
| VIII. RNDC | 9 |
| IX. WF | 10 |

II. EMTC



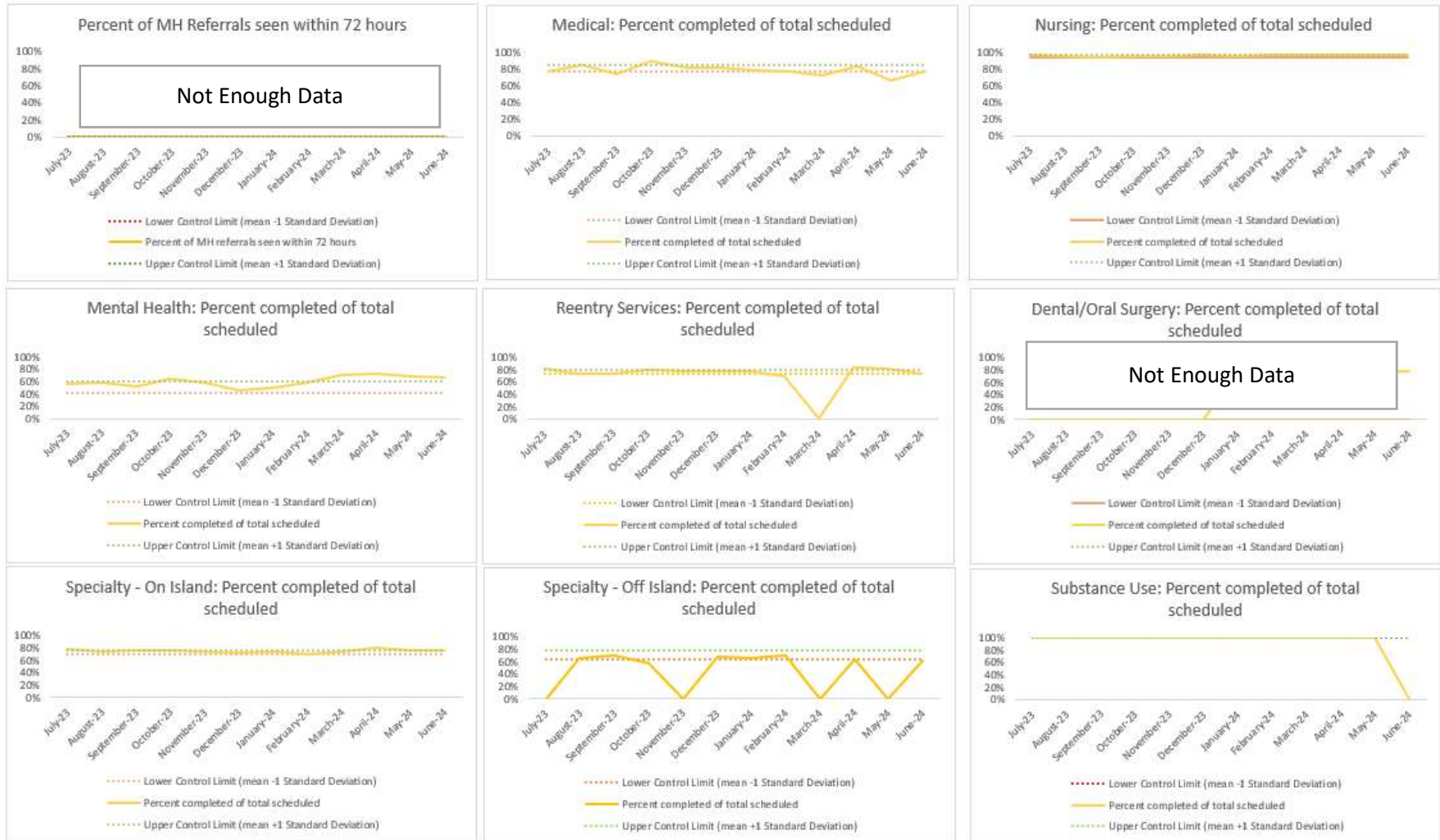
Values of "ND" for not depicted or "N/A" for not applicable are displayed in the graphs as zeroes.

III. GRVC



Values of "ND" for not depicted or "N/A" for not applicable are displayed in the graphs as zeroes.

IV. NIC



Values of “ND” for not depicted or “N/A” for not applicable are displayed in the graphs as zeroes.

V. OBCC



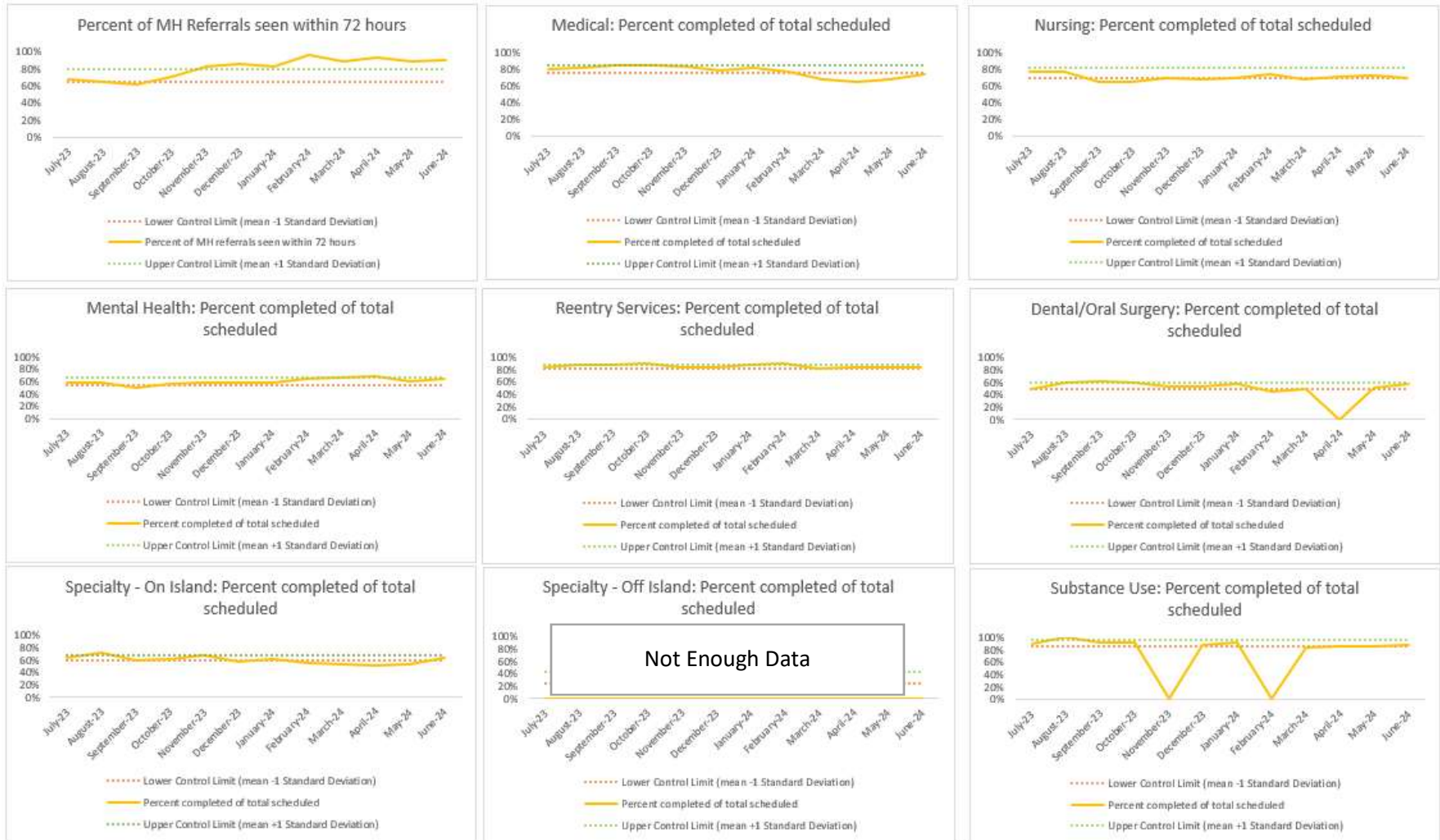
Values of "ND" for not depicted or "N/A" for not applicable are displayed in the graphs as zeroes.

VI. RESH



Values of “ND” for not depicted or “N/A” for not applicable are displayed in the graphs as zeroes.

VII. RMSC



Values of "ND" for not depicted or "N/A" for not applicable are displayed in the graphs as zeroes.

VIII. RNDC



Values of “ND” for not depicted or “N/A” for not applicable are displayed in the graphs as zeroes.

IX. WF



Values of "ND" for not depicted or "N/A" for not applicable are displayed in the graphs as zeroes.