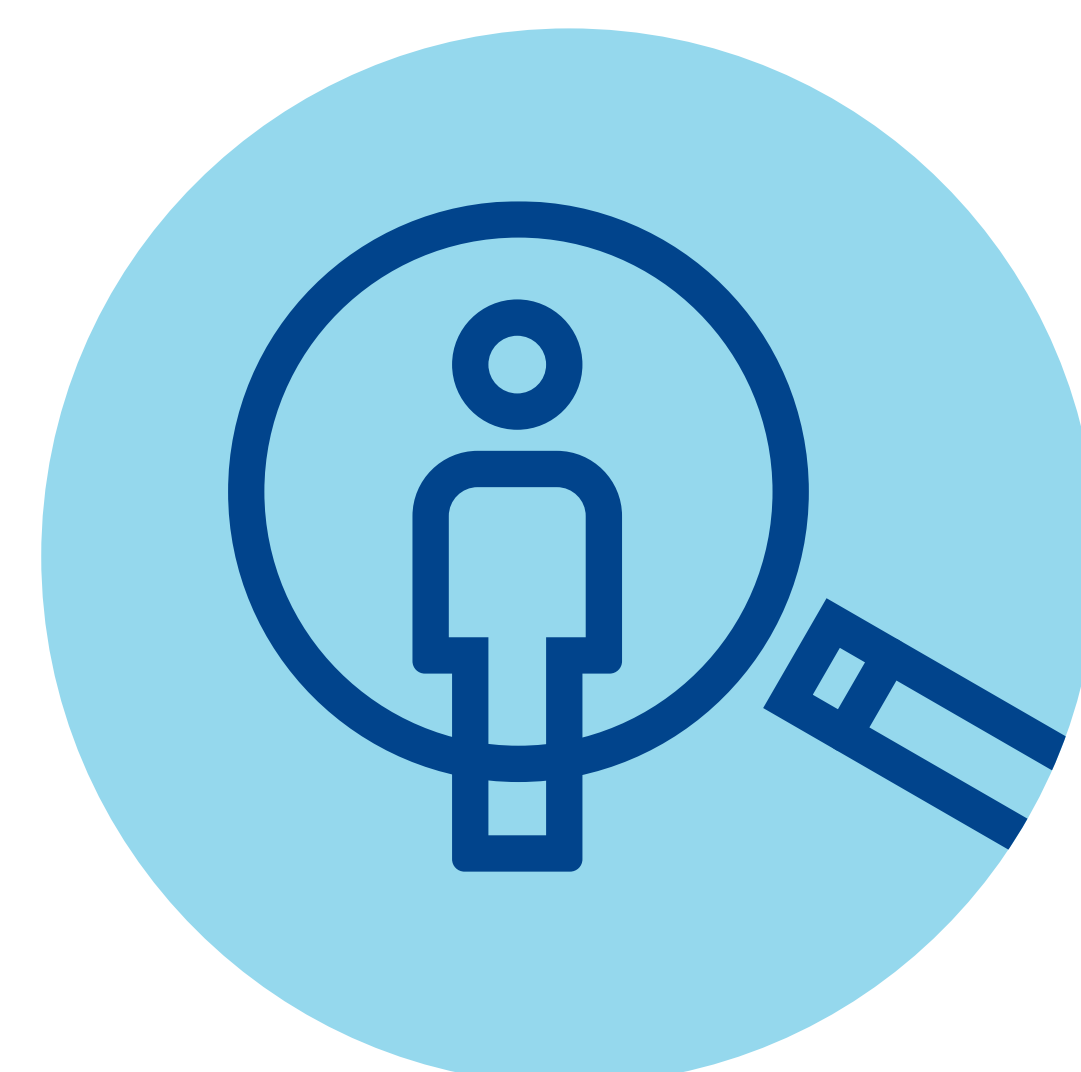


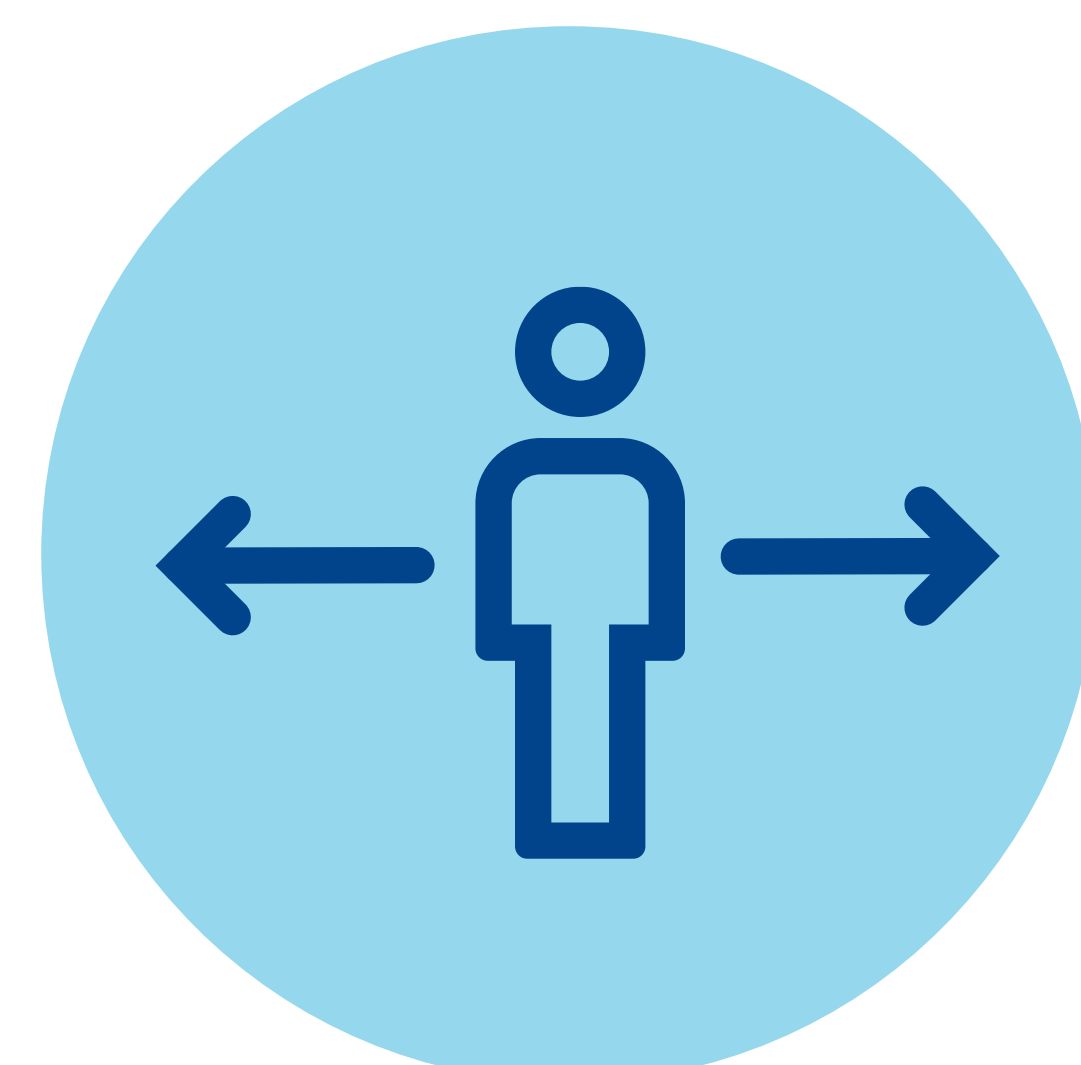
## ATTENTION STAFF

When considering infectious diseases during patient care, remember to:

**1 IDENTIFY** patients with symptoms (fever, cough, rash), and travel or exposure history in the past 30 days.



**2 ISOLATE** the patient. Provide a mask and follow appropriate isolation precautions. Place patient in a private room or an airborne infection isolation room (AIIR) if available.



**3 INFORM** department leadership, infection prevention and control, and other internal departments. Contact the NYC DOHMH Provider. If needed, contact the NYC DOHMH Provider Access Line to ascertain risk: 866-692-3641.

